

User's Guide

Dell E1914H

Dell E2014H

Model No.: E1914H / E2014H

Regulatory model: E1914Hc/ E1914Hf/ E2014Hc/ E2014Hf





NOTE: A NOTE indicates important information that helps you make better use of your monitor.



CAUTION: A CAUTION indicates potential damage to hardware or loss of data if instructions are not followed.



WARNING: A WARNING indicates a potential for property damage, personal injury, or death.

© 2013 Dell Inc. All rights reserved.

Information in this document is subject to change without notice. Reproduction of these materials in any manner whatsoever without the written permission of Dell Inc. is strictly forbidden.

Trademarks used in this text: *Dell* and the *DELL* logo are trademarks of Dell Inc. Microsoft and Windows are either registered trademarks or trademarks of Microsoft Corporation in the United States and/ or other countries. ENERGY STAR is a registered trademark of the U.S. Environmental Protection Agency. As an ENERGY STAR partner, Dell Inc. has determined that this product meets the ENERGY STAR guidelines for energy efficiency.

Other trademarks and trade names may be used in this document to refer to either the entities claiming the marks and names or their products. Dell Inc. disclaims any proprietary interest in trademarks and trade names other than its own.

2013 – 09 Rev. A01

Contents

Dell Display Manager User's Guide	6
Overview	6
Using the Quick Settings Dialog	6
Setting Basic Display Functions	7
Assigning Preset Modes to Applications	7
Applying Energy Conservation Features	9
About Your Monitor	10
Package Contents	10
Product Features	11
Identifying Parts and Controls	12
Monitor Specifications	14
Power Management Modes	14
Pin Assignments	16
Plug and Play Capability	18
Flat-Panel Specifications	18
Resolution Specifications	19
Electrical Specifications	19
Preset Display Modes	20
Physical Characteristics	21
Environmental Characteristics	22
LCD Monitor Quality & Pixel Policy	23
Maintenance Guidelines	23
Caring for Your Monitor	23

Setting Up the Monitor	24
Attaching the Stand	24
Connecting Your Monitor	25
Connecting the blue VGA Cable	25
Connecting the white DVI cable (for E2014H only)	25
Removing the Monitor Stand	26
Wall Mounting (Optional)	27
Operating the Monitor	28
Power On the Monitor	28
Using the Front-Panel Controls	28
Front-Panel Keys	29
Using the On-Screen Display (OSD) Menu	30
Accessing the Menu System	30
OSD Messages	44
Setting the Maximum Resolution	47
Using the Tilt.	48
Troubleshooting	49
Self-Test	49
Built-in Diagnostics.	50
Common Problems.	51
Product-Specific Problems	54
Dell Soundbar Problems.	55
Appendix	58
FCC Notices (U.S. Only) and Other Regulatory Information	58
Contact Dell	58

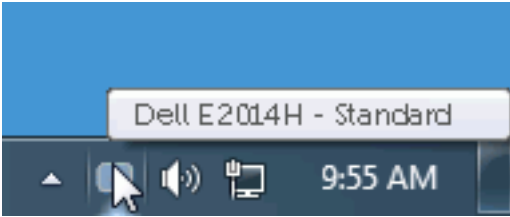
Setting Up Your Monitor 59

- Setting the display resolution to 1366 x 768 (for E1914H) or 1600 x 900 (for E2014H) (Maximum) 59
- If you have a Dell desktop or a Dell portable computer with Internet access 60
- If you have a non Dell desktop, portable computer, or graphics card 60
- Procedures for setting up dual monitors in Windows Vista® , Windows® 7 or Windows® 8 / Windows® 8.1 . 61
 - For Windows Vista®. 61
 - For Windows® 7 63
 - For Windows® 8 / Windows® 8.1 65
 - Setting Display Styles For Multiple Monitor 67

Dell Display Manager User's Guide

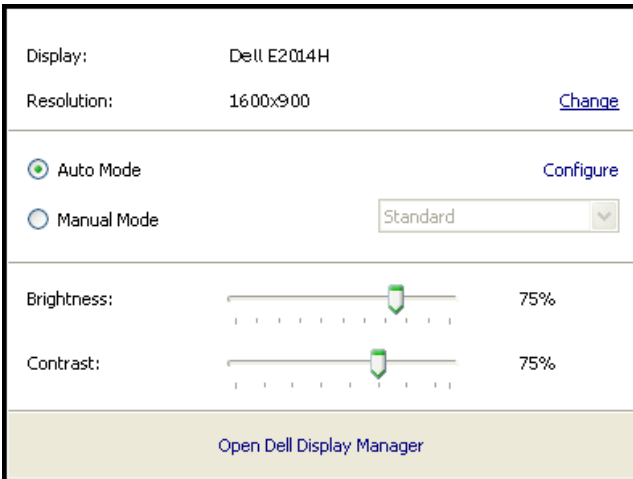
Overview

Dell Display Manager is a Windows application used to manage a monitor or a group of monitors. It allows manual adjustment of the displayed image, assignment of automatic settings, energy management, image rotation and other features on select Dell models. Once installed, Dell Display Manager will run each time the system starts and will place its icon in the notification tray. Information about monitors connected to the system is always available when hovering over the notification tray icon.



Using the Quick Settings Dialog

Clicking Dell Display Manager's notification tray icon opens the Quick Settings dialog box. When more than one supported Dell model is connected to the system, a specific target monitor can be selected using the menu provided. The Quick Settings dialog box allows convenient adjustment of the monitor's Brightness and Contrast levels, Preset Modes can be manually selected or set to Auto Mode, and the screen resolution can be changed.

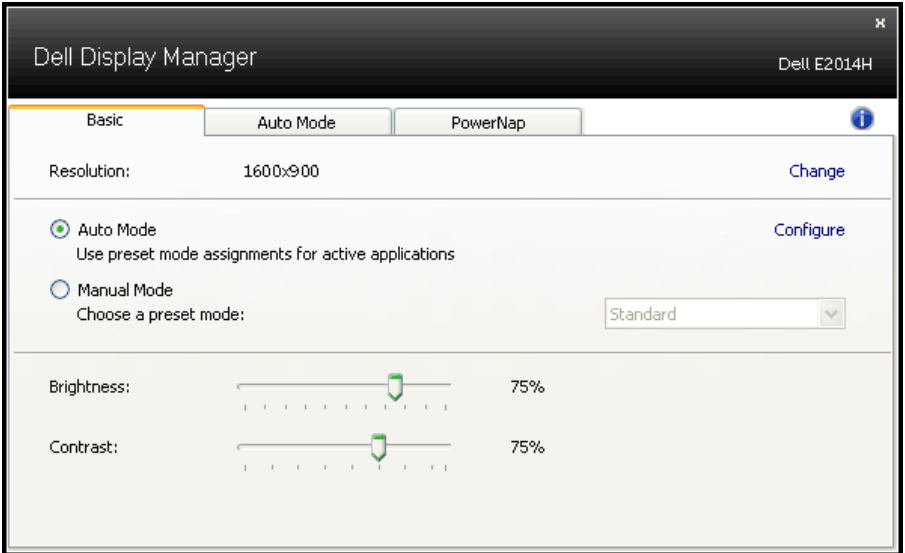


The Quick Settings dialog box also provides access to Dell Display Manager's advanced user interface which is used to adjust Basic functions, configure Auto Mode and access other features.

Setting Basic Display Functions

A Preset Mode for the selected monitor can be manually applied using the menu on the Basic tab. Alternatively, Auto Mode can be enabled. Auto Mode causes your preferred Preset Mode to be applied automatically when specific applications are active. An onscreen message momentarily displays the current Preset Mode whenever it changes.

The selected monitor's Brightness and Contrast can also be directly adjusted from the Basic tab.

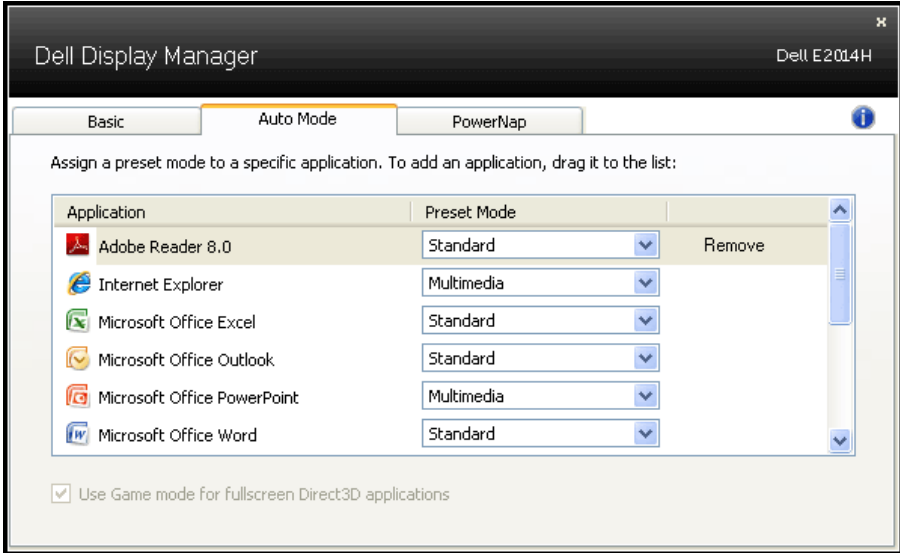


Assigning Preset Modes to Applications

The Auto Mode tab allows you to associate a specific Preset Mode with a specific application, and apply it automatically. When Auto Mode is enabled, Dell Display Manager will automatically switch to the corresponding Preset Mode whenever the associated application is activated. The Preset Mode assigned to a particular application may be the same on each connected monitor, or it can vary from one monitor to the next.

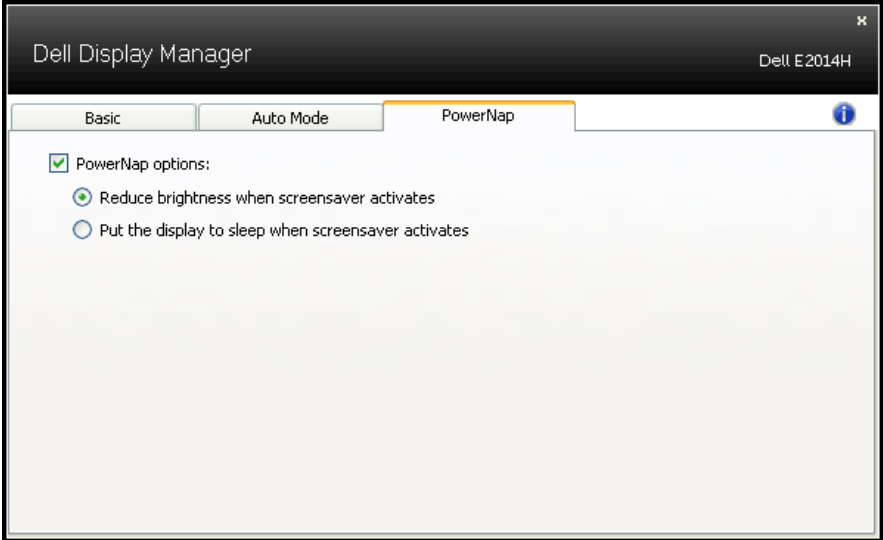
Dell Display Manager is pre-configured for many popular applications. To add a new application to the assignment list, simply drag the application from the desktop, Windows Start Menu or elsewhere, and drop it onto the current list.

NOTE: Preset Mode assignments targeting batch files, scripts, and loaders, as well as non-executable files such as zip archives or packed files, are not supported and will be ineffective.



Applying Energy Conservation Features


On supported Dell models the PowerNap tab will be available to provide energy conservation options. When the screensaver activates, the monitor's Brightness can automatically be set to minimum level or the monitor can be put to sleep in order to save additional power.




About Your Monitor

Package Contents

Your monitor ships with all the components shown below. Ensure that you have received all the components and **Contact Dell** if anything is missing.

 **NOTE:** Some items may be optional and may not ship with your monitor. Some features or media may not be available in certain countries.

	<ul style="list-style-type: none">• Monitor
	<ul style="list-style-type: none">• Stand Riser
	<ul style="list-style-type: none">• Stand Base
	<ul style="list-style-type: none">• VESA™ Screw Cover
	<ul style="list-style-type: none">• Power Cable (varies with countries)
	<ul style="list-style-type: none">• VGA Cable
	<ul style="list-style-type: none">• DVI Cable (for E2014H)
	<ul style="list-style-type: none">• Drivers and Documentation media• Quick Setup Guide• Product Information Guide

Product Features

The Dell E1914H/E2014H flat-panel display has an active matrix, Thin-Film Transistor, Liquid Crystal Display. The monitor's features include:

- E1914H: 47.01cm (18.51 inches) diagonal viewable image size, 1366 x 768 resolution, plus full-screen support for lower resolutions.
- E2014H: 49.40 cm (19.45 inches) diagonal viewable image size, 1600 x 900 resolution, plus full-screen support for lower resolutions.
- LED backlit
- Tilt adjustment capability.
- Removable pedestal and Video Electronics Standards Association (VESA) 100 mm mounting holes for flexible mounting solutions.
- Plug and play capability if supported by your system.
- On-Screen Display (OSD) adjustments for ease of set-up and screen optimization.
- Software and documentation media which includes an information file (INF), Image Color Matching File (ICM), and product documentation.
- Dell Display Manager Software
- ENERGY STAR-compliant.
- Security lock slot.
- Asset Management Capability.
- EPEAT compliant. Gold for E2014H.
- CECP
- RoHS compliant.
- TCO compliant for E2014H

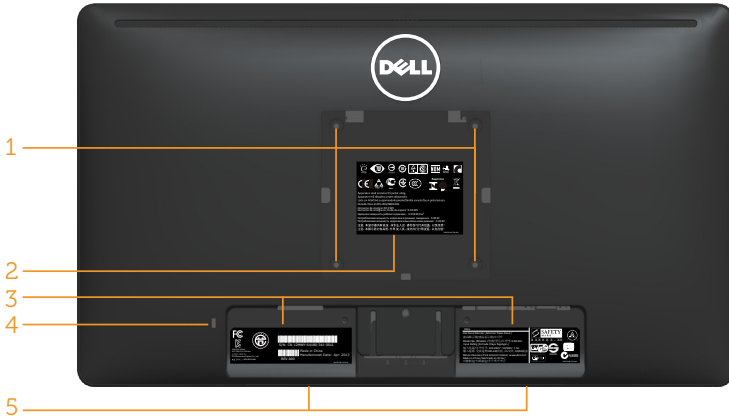
Identifying Parts and Controls

Front View



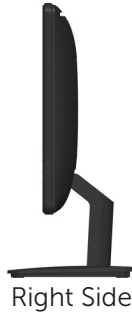
1.	Function buttons (For more information, see Operating the Monitor)
2.	Power On/Off button (with LED indicator)

Back View



Label	Description	Use
1	VESA mounting holes (100 mm)	To mount the monitor.
2	Regulatory rating label	Lists the regulatory approvals.
3	Regulatory rating label	Lists the regulatory approvals.
4	Security lock slot	Use a security lock with the slot to help secure your monitor.
5	Dell soundbar mounting brackets	To attach the optional Dell Soundbar.

Side View



Bottom View

E1914H:



Label	Description	Use
1	AC power connector	To connect the monitor power cable.
2	VGA connector	To connect your computer to the monitor using a VGA cable.

E2014H:



Label	Description	Use
1	AC power connector	To connect the monitor power cable.
2	DVI connector	To connect your computer to the monitor using a DVI cable.
3	VGA connector	To connect your computer to the monitor using a VGA cable.

Monitor Specifications

The following sections give you information about the various power management modes and pin assignments for the various connectors of your monitor.

Power Management Modes

If you have VESA's DPM compliance display card or software installed in your PC, the monitor automatically reduces its power consumption when not in use. This is referred to as Power Save Mode. If the computer detects input from keyboard, mouse, or other input devices, the monitor automatically resumes functioning. The following table shows the power consumption and signaling of this automatic power saving feature:

E1914H:

VESA Modes	Horizontal Sync	Vertical Sync	Video	Power Indicator	Power Consumption
Normal operation	Active	Active	Active	White	18 W (Maximum) ** 12 W (Typical)
Active-off mode	Inactive	Inactive	Blank	Glowing white	Less than 0.5 W
Switch off	-	-		Off	Less than 0.5 W *

E2014H:

VESA Modes	Horizontal Sync	Vertical Sync	Video	Power Indicator	Power Consumption
Normal operation	Active	Active	Active	White	22 W (Maximum) ** 14 W (Typical)
Active-off mode	Inactive	Inactive	Blank	Glowing white	Less than 0.5 W
Switch off	-	-		Off	Less than 0.5 W*

The OSD will only function in the *normal operation* mode. When any button except power button is pressed in Active-off mode, the following messages will be displayed:


Dell E1914H

There is no signal coming from your computer. Press any key on the keyboard or move the mouse to wake it up.

Dell E2014H

There is no signal coming from your computer. Press any key on the keyboard or move the mouse to wake it up. If there is no display, press the monitor button now to select the correct input source on the On-Screen-Display menu.

Activate the computer and monitor to gain access to the **OSD**.

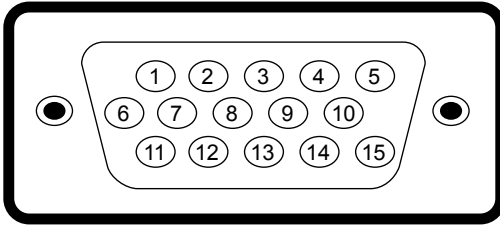
 **NOTE:** The Dell E1914H/E2014H monitor is ENERGY STAR®-compliant.



- * Zero-power consumption in OFF mode can only be achieved by disconnecting the main cable from the monitor.
- ** Maximum power consumption with max luminance and contrast.

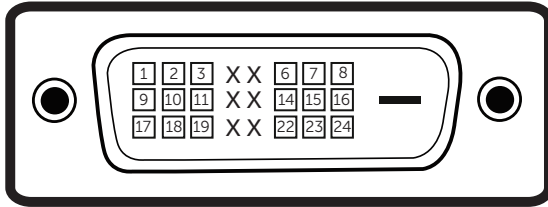
Pin Assignments

15-pin D-Sub connector



Pin Number	Monitor Side of the 15-pin Side Signal Cable
1	Video-Red
2	Video-Green
3	Video-Blue
4	GND
5	Self-test
6	GND-R
7	GND-G
8	GND-B
9	DDC +5 V
10	GND-sync
11	GND
12	DDC data
13	H-sync
14	V-sync
15	DDC clock

DVI Connector



Pin Number	24-pin Side of the Connected Signal Cable
1	TMDS RX2-
2	TMDS RX2+
3	TMDS Ground
4	Floating
5	Floating
6	DDC Clock
7	DDC Data
8	Floating
9	TMDS RX1-
10	TMDS RX1+
11	TMDS Ground
12	Floating
13	Floating
14	+5 V power
15	Self test
16	Hot Plug Detect
17	TMDS RX0-
18	TMDS RX0+
19	TMDS Ground
20	Floating
21	Floating
22	TMDS Ground
23	TMDS Clock+
24	TMDS Clock-

Plug and Play Capability

You can install the monitor in any Plug and Play compatible system. The monitor automatically provides the computer with its Extended Display Identification Data (EDID) using Display Data Channel (DDC) protocols so that the system can configure itself and optimize the monitor settings. Most monitor installations are automatic. You can select different settings if required.

Flat-Panel Specifications

Model number	Dell E1914H monitor	Dell E2014H monitor
Screen type	Active matrix - TFT LCD	Active matrix - TFT LCD
Panel Type	TN	TN
Viewable image dimensions:		
Diagonal	47.01cm (18.51 inches)	49.40 cm (19.45 inches)
Horizontal	409.8 mm (16.13 inches)	432.0 +/- 1.92 mm (17.00 +/- 0.08 inches)
Vertical	230.4 mm (9.07 inches)	239.76 +/- 3.42 mm (9.44 +/- 0.13 inches)
Pixel pitch	0.30 mm	0.27 mm
Viewing angle:		
Horizontal	90° typical	170° typical
Vertical	65° typical	160° typical
Luminance output	200 cd/m ² (typical)	250 cd/m ² (typical)
Contrast ratio	600 to 1 (typical)	1000 to 1 (typical)
Faceplate coating	Antiglare with hard-coating 3H	Antiglare with hard-coating 3H
Backlight	LED light bar system	LED light bar system
Response Time	5 ms typical (black to white)	5 ms typical (black to white)
Color Depth	16.7 mil colors	16.7 mil colors
Color Gamut	83 % (typical) **	83 % (typical) **

** [E1914H/E2014H] color gamut (typical) is based on CIE1976 (83 %) and CIE1931 (72 %) test standards.

Resolution Specifications

Model number	Dell E1914H monitor	Dell E2014H monitor
Scan range		
<ul style="list-style-type: none">HorizontalVertical	30 kHz to 83 kHz (automatic) 56 Hz to 75 Hz (automatic)	30 kHz to 83 kHz (automatic) 56 Hz to 76 Hz (automatic)
Maximum preset resolution	1366 x 768 at 60 Hz	1600 x 900 at 60 Hz

Electrical Specifications

Model number	Dell E1914H/E2014H monitor
Video input signals	Analog RGB: 0.7 Volts +/- 5 %, 75 ohm input impedance
Synchronization input signals	Separate horizontal and vertical synchronizations, polarity-free TTL level, SOG (Composite SYNC on green)
AC input voltage / frequency / current	100 VAC to 240 VAC/50 Hz or 60 Hz + 3 Hz/1.5 A (Max.)
Inrush current	120 V: 30 A (Max.) 240 V: 60 A (Max.)

Preset Display Modes

The following table lists the preset modes for which Dell guarantees image size and centering:

E1914H:

Display Mode	Horizontal Frequency (kHz)	Vertical Frequency (Hz)	Pixel Clock (MHz)	Sync Polarity (Horizontal/Vertical)
VESA, 720 x 400	31.5	70.0	28.3	-/+
VESA, 640 x 480	31.5	59.9	25.2	-/-
VESA, 640 x 480	37.5	75.0	31.5	-/-
VESA, 800 x 600	37.9	60.3	40.0	+/+
VESA, 800 x 600	46.9	75.0	49.5	+/+
VESA, 1024 x 768	48.4	60.0	65.0	-/-
VESA, 1024 x 768	60.0	75.0	78.8	+/+
VESA, 1280 x 1024	80.0	75.0	135.0	+/+
VESA, 1366 x 768	47.7	59.8	85.5	+/+

E2014H:

Display Mode	Horizontal Frequency (kHz)	Vertical Frequency (Hz)	Pixel Clock (MHz)	Sync Polarity (Horizontal/Vertical)
VESA, 720 x 400	31.5	70.1	28.3	-/+
VESA, 640 x 480	31.5	59.9	25.2	-/-
VESA, 640 x 480	37.5	75.0	31.5	-/-
VESA, 800 x 600	37.9	60.3	40.0	+/+
VESA, 800 x 600	46.9	75.0	49.5	+/+
VESA, 1024 x 768	48.4	60.0	65.0	-/-
VESA, 1024 x 768	60.0	75.0	78.8	+/+
VESA, 1152 x 864	67.5	75.0	108.0	+/+
VESA, 1280 x 1024	64.0	60.0	108.0	+/+
VESA, 1280 x 1024	80.0	75.0	135.0	+/+
VESA, 1600 x 900	60.0	60.0	108.0	+/+

Physical Characteristics

The following table lists the monitor's physical characteristics:

Model Number	Dell E1914H monitor	Dell E2014H monitor
Connector type	D-subminiature, blue connector	D-subminiature, blue connector; DVI-D: white connector
Signal cable type	Analog: Detachable, D-Sub, 15-pin, shipped attached to the monitor	D-sub: Detachable, Analog, 15-pin. DVI-D: Detachable, DVI-D, Solid pins
Dimensions: (with stand) Height	354.1 mm (13.94 inches)	358.8 mm (14.13 inches)
Width	446.4 mm (17.57 inches)	473.9 mm (typical), 468.6 mm (minimum) (18.66 inches (typical), 18.45 inches (minimum))
Depth	165.5 mm (6.52 inches)	165.5 mm (6.52 inches)
Dimensions: (without stand) Height	267.0 mm (10.51 inches)	276.3 mm (10.88 inches)
Width	446.4 mm (17.57 inches)	473.9 mm (typical), 468.6 mm (minimum) (18.66 inches (typical), 18.45 inches (minimum))
Depth	46.5 mm (1.83 inches)	46.5 mm (1.83 inches)
Stand dimensions:		
• Height	149.0 mm (5.87 inches)	149.0 mm (5.87 inches)
• Width	180.6 mm (7.11 inches)	180.6 mm (7.11 inches)
• Depth	165.5 mm (6.52 inches)	165.5 mm (6.52 inches)
Weight:		
Weight with packaging	3.60 kg (7.92 lb)	4.25 kg (9.35 lb)
Weight with stand assembly and cables	2.99 kg (6.58 lb)	3.14 kg (6.91 lb)

Weight without stand assembly (For wall mount or VESA mount considerations - no cables)	2.39 kg (5.26 lb)	2.41 kg (5.30 lb)
Weight of stand assembly	0.33 kg (0.73 lb)	0.33 kg (0.73 lb)

Environmental Characteristics

The following table lists the environmental conditions for your monitor:

Model Number	Dell E1914H monitor	Dell E2014H monitor
Temperature <ul style="list-style-type: none"> Operating Non-operating 	0 °C to 40 °C (32 °F to 104 °F) Storage: -20 °C to 60 °C (-4 °F to 140 °F) Shipping: -20 °C to 60 °C (-4 °F to 140 °F)	0 °C to 40 °C (32 °F to 104 °F) Storage: -20 °C to 60 °C (-4 °F to 140 °F) Shipping: -20 °C to 60 °C (-4 °F to 140 °F)
Humidity <ul style="list-style-type: none"> Operating Non-operating 	10 % to 80 % (non-condensing) Storage: 5 % to 90 % (non-condensing) Shipping: 5 % to 90 % (non-condensing)	10 % to 80 % (non-condensing) Storage: 5 % to 90 % (non-condensing) Shipping: 5 % to 90 % (non-condensing)
Altitude <ul style="list-style-type: none"> Operating Non-operating 	5,000 m (16,387 ft) max 12,191 m (40,000 ft) max	5,000 m (16,387 ft) max 12,191 m (40,000 ft) max
Thermal dissipation	75.09 BTU/hour (maximum) 61.43 BTU/hour (typical)	85.33 BTU/hour (maximum) 68.26 BTU/hour (typical)

LCD Monitor Quality & Pixel Policy

During the LCD Monitor manufacturing process, it is not uncommon for one or more pixels to become fixed in an unchanging state. The visible result is a fixed pixel that appears as an extremely tiny dark or bright discolored spot. When the pixel remains permanently lit, it is known as a "bright dot." When the pixel remains black, it is known as a "dark dot."

In almost every case, these fixed pixels are hard to see and do not detract from display quality or usability. A display with 1 to 5 fixed pixels is considered normal and within competitive standards. For more information, see Dell Support site at:

<http://www.dell.com/support/monitors>.

Maintenance Guidelines

Caring for Your Monitor



CAUTION: Read and follow the safety instructions before cleaning the monitor.



CAUTION: Before cleaning the monitor, unplug the monitor power cable from the electrical outlet.

For best practices, follow the instructions in the list below while unpacking, cleaning, or handling your monitor:

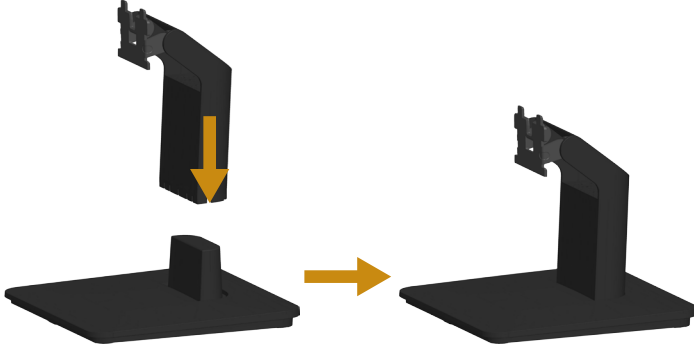
- To clean your antistatic screen, slightly dampen a soft, clean cloth with water. If possible, use a special screen-cleaning tissue or solution suitable for the antistatic coating. Do not use benzene, thinner, ammonia, abrasive cleaners, or compressed air.
- Use a slightly dampened, warm cloth to clean the plastics. Avoid using detergent of any kind as some detergents leave a milky film on the plastics.
- If you notice a white powder when you unpack your monitor, wipe it off with a cloth. This white powder occurs during the shipping of the monitor.
- Handle your monitor with care as a darker-colored monitor may scratch and show white scuff marks more than a lighter-colored monitor.
- To help maintain the best image quality on your monitor, use a dynamically changing screen saver and power off your monitor when not in use.

Setting Up the Monitor

Attaching the Stand

 **NOTE:** The stand base is detached when the monitor is shipped from the factory.

1. Assemble the stand riser to stand base.



- a. Place the monitor stand base on a stable table top.
 - b. Slide the monitor stand body in the correct direction down onto the stand base until it clicks into place.
2. Attach the stand assembly to the monitor:



- a. Place the monitor on a soft cloth or cushion near the edge of desk.
- b. Align the stand assembly bracket to the monitor groove.
- c. Insert the bracket towards monitor until it locks in place.

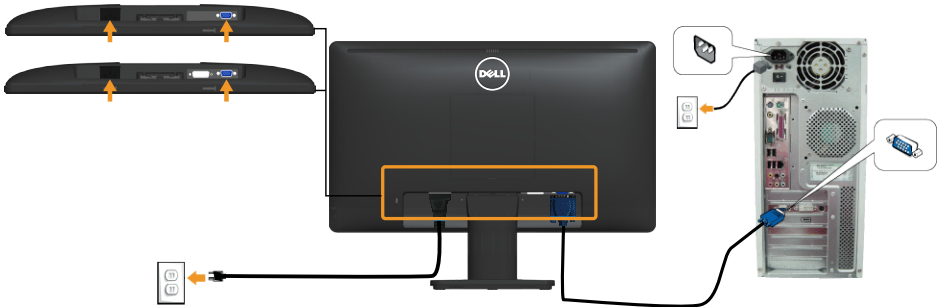
Connecting Your Monitor

⚠ WARNING: Before you begin any of the procedures in this section, follow the **Safety Instructions**.

To connect your monitor to the computer:

1. Turn off your computer and disconnect the power cable.
2. Connect either the white (digital DVI-D) or the blue (analog VGA) display connector cable to the corresponding video port on the back of your computer. Do not use both cables on the same at the same time. Use both the cables only when they are connected to two different computers with appropriate video systems.

Connecting the blue VGA Cable

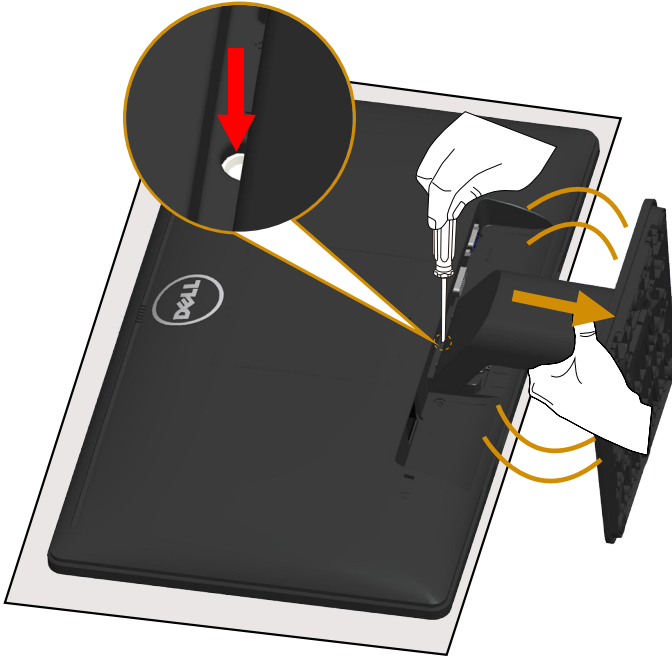


Connecting the white DVI cable (for E2014H only)



Note: The graphics are used for the purpose of illustration only. Appearance on the computer may vary.

Removing the Monitor Stand



After placing the monitor panel on a soft cloth or cushion, complete the following steps to remove the stand:

1. Use a long screwdriver to press and hold the release latch located in a hole just above the stand.
2. While the release latch is pressed down, remove the stand from the monitor slowly.

Wall Mounting (Optional)

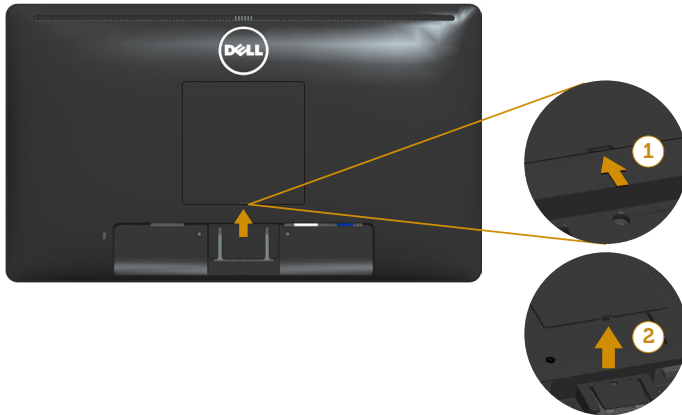


figure 1

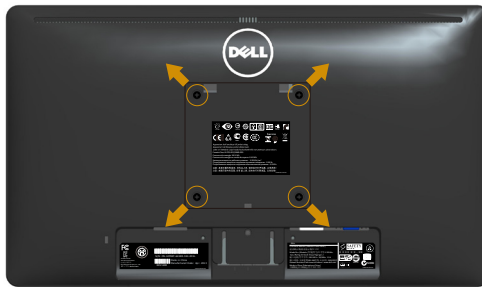



figure 2

(Screw dimension: M4 x 10 mm).

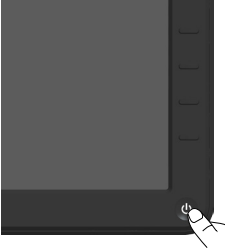
Refer to the instructions that come with the VESA-compatible base mounting kit.

1. Place the monitor panel on a soft cloth or cushion on a stable flat table.
 2. Remove the stand.
 3. Remove the VESA™ Screw Cover (figure 1)
 4. Use a screwdriver to remove the four screws securing the plastic cover. (figure 2)
 5. Attach the mounting bracket from the wall mounting kit to the LCD.
 6. Mount the LCD on the wall by following the instructions that came with the base mounting kit.
-  **NOTE:** For use only with UL-listed wall mount bracket with minimum weight/load bearing capacity of 9.00 kg (for E1914H)/ 9.12 kg (for E2014H)

Operating the Monitor

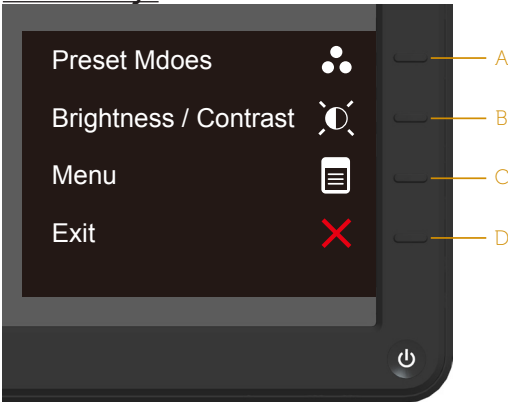
Power On the Monitor





Press the  button to turn on the monitor.



Using the Front-Panel Controls





Use the **keys** on the front of the monitor to adjust the image settings.



Front-Panel Keys		Description
A	 Preset modes	Use the Preset modes key to choose from a list of preset color modes. See Using the OSD Menu .
B	 Brightness / Contrast	Use the Brightness / Contrast key to direct access to the "Brightness" and "Contrast" control menu.
C	 Menu	Use the Menu key to open the on-screen display (OSD).
D	 Exit	Use the Exit key to exit on-screen display (OSD) from menu and sub-menus.


Front-Panel Keys



Front-Panel Keys		Description
A	 Up	Use the Up key to adjust (increase ranges) items in the OSD menu.
B	 Down	Use the Down key to adjust (decrease ranges) items in the OSD menu.
C	 OK	Use the OK key to confirm your selection.
D	 Back	Use the Back key to go back to the previous menu.

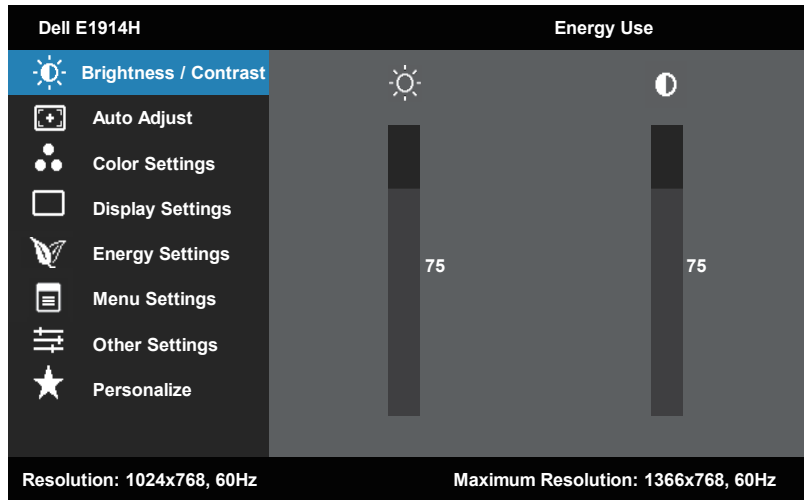
Using the On-Screen Display (OSD) Menu

Accessing the Menu System

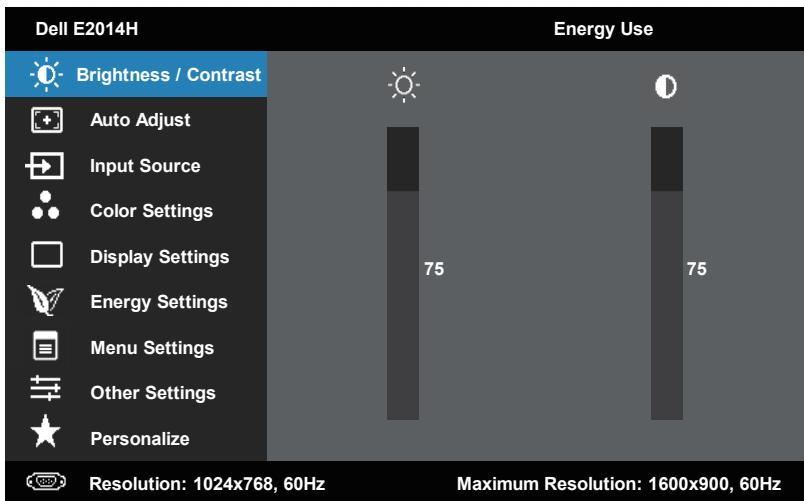
 **NOTE:** If you change the settings and then either proceed to another menu or exit the OSD menu, the monitor automatically saves those changes. The changes are also saved if you change the settings and then wait for the OSD menu to disappear.

1. Press the  button to open the OSD menu and display the main menu.

Main Menu





The OSD main menu for the Dell E1914H monitor. The top bar shows 'Dell E1914H' on the left and 'Energy Use' on the right. Below this is a 'Brightness / Contrast' section with two sliders, both set to 75. A left sidebar lists menu options: Brightness / Contrast (selected), Auto Adjust, Color Settings, Display Settings, Energy Settings, Menu Settings, Other Settings, and Personalize. At the bottom, it displays 'Resolution: 1024x768, 60Hz' and 'Maximum Resolution: 1366x768, 60Hz'. To the right of the screen is a vertical control panel with up, down, and right arrow buttons, and a red X button.




The OSD main menu for the Dell E2014H monitor. The top bar shows 'Dell E2014H' on the left and 'Energy Use' on the right. Below this is a 'Brightness / Contrast' section with two sliders, both set to 75. A left sidebar lists menu options: Brightness / Contrast (selected), Auto Adjust, Input Source, Color Settings, Display Settings, Energy Settings, Menu Settings, Other Settings, and Personalize. At the bottom, it displays 'Resolution: 1024x768, 60Hz' and 'Maximum Resolution: 1600x900, 60Hz'. To the right of the screen is a vertical control panel with up, down, and right arrow buttons, and a red X button.


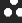





- Press the **▲** and **▼** buttons to toggle between options in the Menu. As you move from one icon to another, the option name is highlighted.
- To select the highlighted item on the menu press the **➔** button again.
- Press the **▲** and **▼** buttons to select the desired parameter.
- Press the **➔** button to enter the slide bar and then use the **▲** or **▼** buttons, according to the indicators on the menu, to make your changes.
- Select the **⏪** to return to previous menu without accepting current settings or **✓** to accept and return to previous menu.


The table below provides a list of all the OSD menu options and their functions.

Icon	Menu and Submenus	Description
	Energy Use	This meter shows the energy level being consumed by the monitor in real time.
	Brightness/Contrast	Use the Brightness and Contrast menu to adjust the Brightness/Contrast.


Dell E1914H Energy Use 

Brightness / Contrast

-  Auto Adjust
-  Color Settings
-  Display Settings
-  Energy Settings
-  Menu Settings
-  Other Settings
-  Personalize








75











75


Resolution: 1024x768, 60Hz Maximum Resolution: 1366x768, 60Hz


Dell E2014H Energy Use 

Brightness / Contrast

-  Auto Adjust
-  Input Source
-  Color Settings
-  Display Settings
-  Energy Settings
-  Menu Settings
-  Other Settings
-  Personalize







75



75

Resolution: 1024x768, 60Hz Maximum Resolution: 1600x900, 60Hz

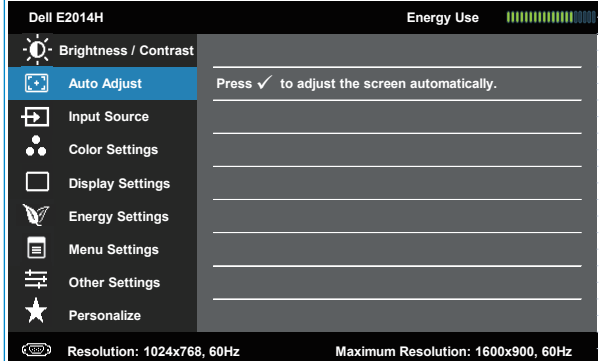
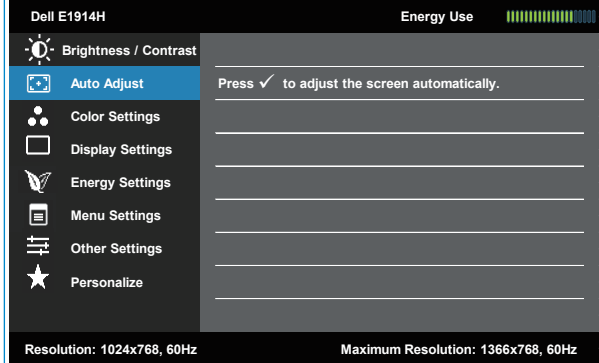





Brightness	<p>Allows you to adjust the brightness or luminance of the backlight.</p> <p>Press the ▲ key to increase brightness and press the ▼ key to decrease brightness (min 0 ~ max 100).</p>
Contrast	<p>Allows you to adjust the contrast or the degree of difference between darkness and lightness on the monitor screen. Adjust brightness first, and adjust contrast only if you need further adjustment.</p> <p>Press the ▲ key to increase contrast and press the ▼ key to decrease contrast (min 0 ~ max 100).</p>



Auto Adjust

Use this key to activate automatic setup and adjust menu.



The following dialog appears on a black screen as the monitor self-adjusts to the current input:

Auto Adjustment in Progress...

Auto Adjustment allows the monitor to self-adjust to the incoming video signal. After using Auto Adjustment, you can further tune your monitor by using the Pixel Clock (Coarse) and Phase (Fine) controls under **Display Settings**.

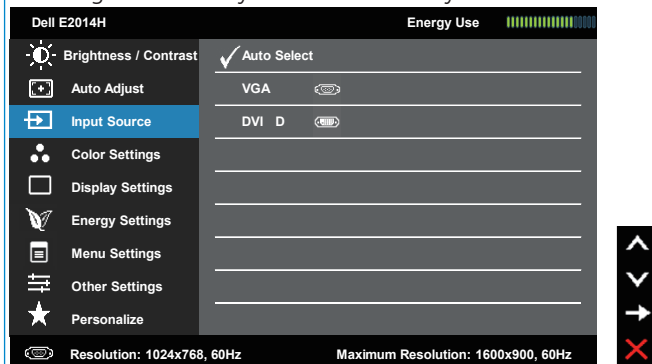
NOTE: Auto Adjust does not occur if you press the button while there are no active video input signals or attached cables.


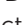
This option is only available when you are using the analog (VGA) connector.



Input Source (for E2014H only)

Use the **Input Source** menu to select between different video signals that may be connected to your monitor.

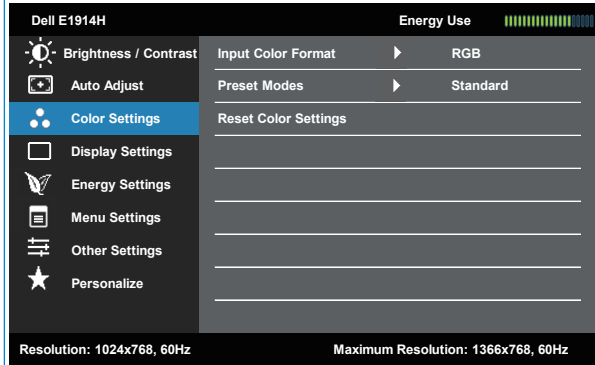


Auto Select	Select Auto Select to scan for available input signals.
VGA	Select VGA input when you are using the analog (VGA) connector. Push  to select the VGA input source.
DVI-D	Select DVI-D input when you are using the Digital (DVI) connector. Push  to select the DVI input source.



Color Settings

Use the **Color Settings** menu to adjust the monitor's color settings.



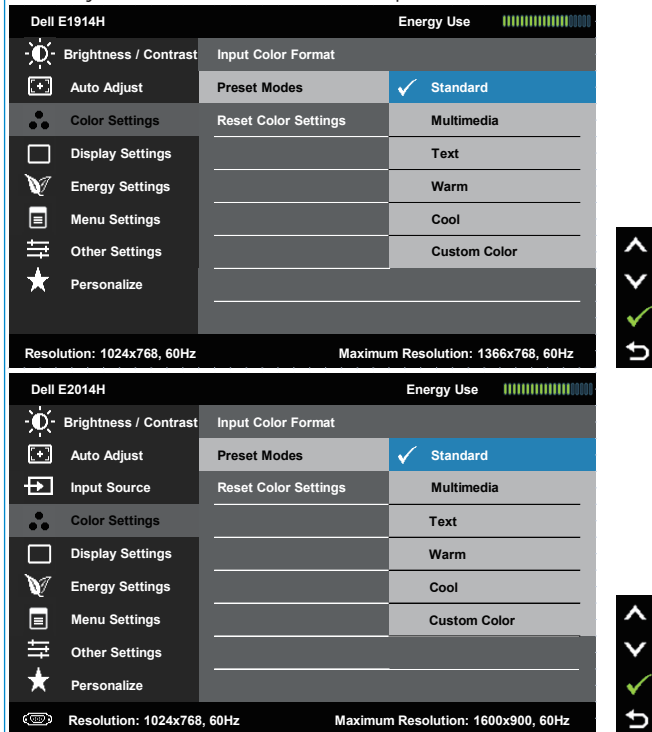
Input Color Format



Allows you to set the video input mode to:

- **RGB:** Select this option if your monitor is connected to a computer or DVD player using the HDMI to DVI adapter.
- **YPbPr:** Select this option if your DVD player supports only YPbPr output.

Preset Modes

Allows you to choose from a list of preset color modes.



- **Standard:** Loads the monitor's default color settings. This is the default preset mode.
- **Multimedia:** Loads color settings ideal for multimedia applications.
- **Text:** Loads color settings ideal for office environment.
- **Warm:** Increases the color temperature. The screen appears warmer with a red/yellow tint.
- **Cool:** Decreases the color temperature. The screen appears cooler with a blue tint.
- **Custom Color:** Allows you to manually adjust the color settings. Press the  and  keys to adjust the Red, Green, and Blue values and create your own preset color mode.

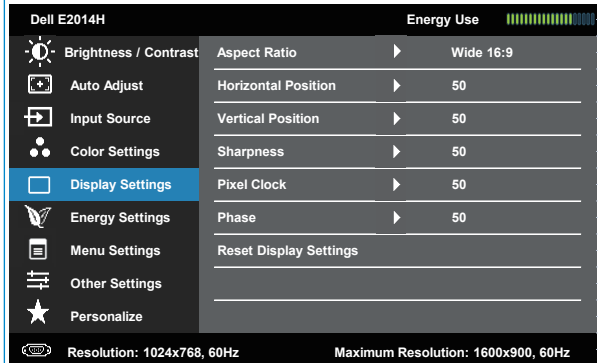
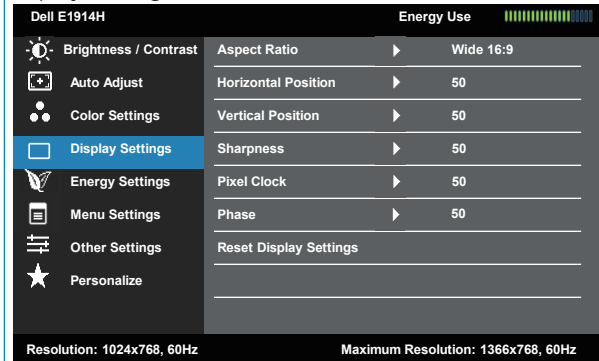
Reset Color Settings

Resets your monitor's color settings to the factory defaults.

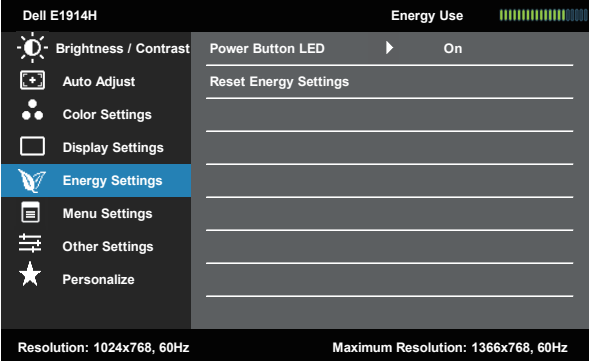
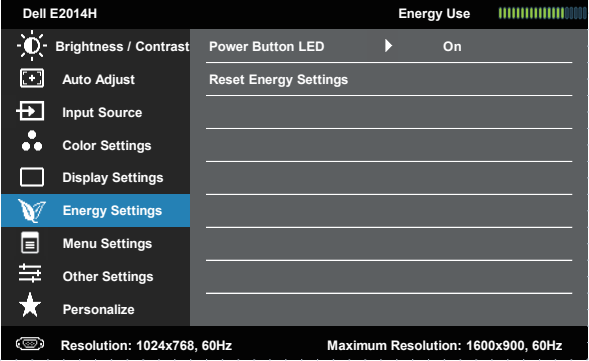


Display Settings

Use the **Displays Settings** menu to adjust the monitor's display settings.



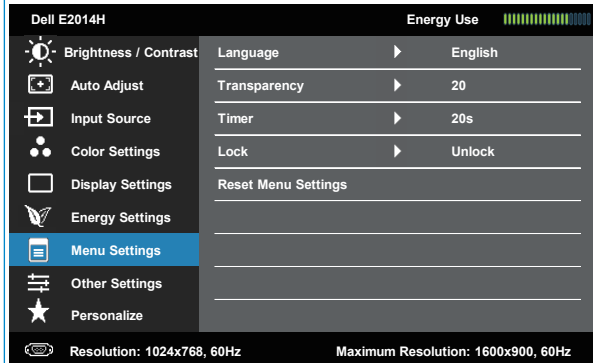
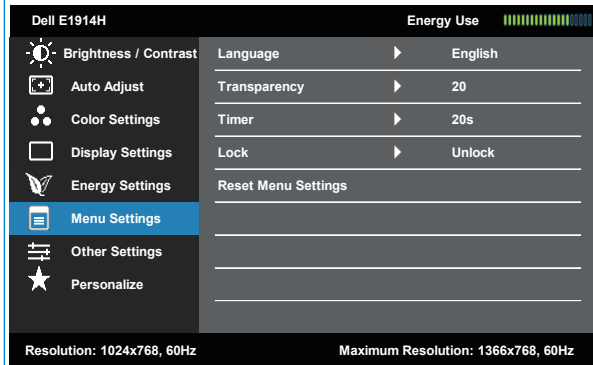
Aspect Ratio	Adjusts the image ratio as Wide 16:9, 4:3, or 5:4. NOTE: Wide 16:9 adjustment is not required at maximum preset resolution 1366 x 768 (for E1914H) or 1600 x 900 (for E2014H).
Horizontal Position	Use or the buttons to adjust image left and right. Minimum is '0' (-). Maximum is '100' (+).
Vertical Position	Use the or buttons to adjust image up and down. Minimum is '0' (-). Maximum is '100' (+).
Sharpness	This feature can make the image look sharper or softer. Use or to adjust the sharpness from '0' to '100'.
Pixel Clock	The Phase and Pixel Clock adjustments allow you to adjust your monitor to your preference. Use or buttons to adjust for best image quality.
Phase	If satisfactory results are not obtained using the Phase adjustment, use the Pixel Clock (coarse) adjustment and then use Phase (fine), again.

	<p>Reset Display Settings</p> <p>Energy Settings</p>	<p>Select this option to restore default display settings.</p>  
	<p>Power Button LED</p>	<p>Allows you to set the power LED indicator on or off to save energy.</p>
	<p>Reset Energy Settings</p>	<p>Select this option to restore default Energy Settings.</p>



Menu Settings

Select this option to adjust the settings of the OSD such as, the languages of the OSD, the amount of time the menu remains on screen, and so on.



Language

Allows you to set the OSD display to one of eight languages: English, Spanish, French, German, Portuguese, Russian, Simplified Chinese, or Japanese.

Transparency

Allows you to adjust the OSD background from opaque to transparent.

Timer


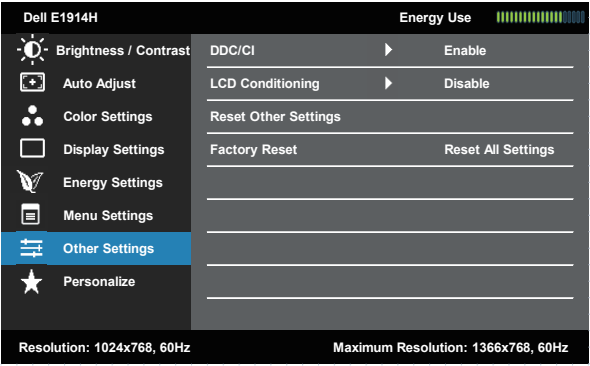
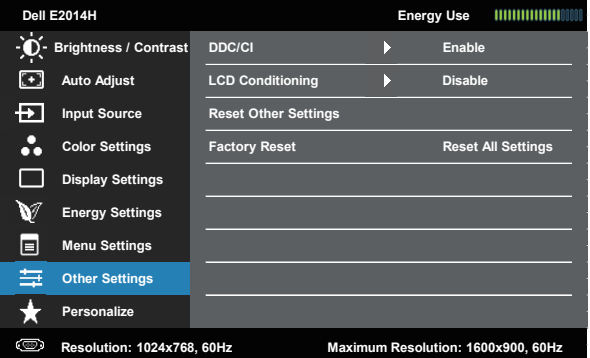
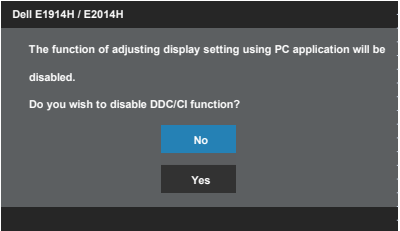
Allows you to set the time for which the OSD remains active after you press a key on the monitor.


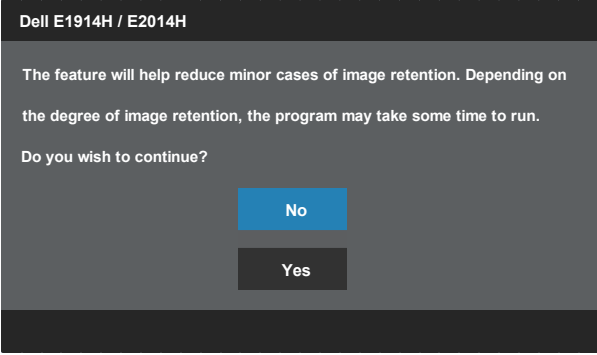
Use the and keys to adjust the slider in 1 second increments, from 5 to 60 seconds.

Lock

Controls user access to adjustments. When Lock is selected, no user adjustments are allowed. All keys are locked except key.

NOTE: When the OSD is locked, pressing the menu key takes you directly to the OSD settings menu, with 'OSD Lock' pre-selected on entry. Press and hold key for 10 seconds to unlock and allow user access to all applicable settings.

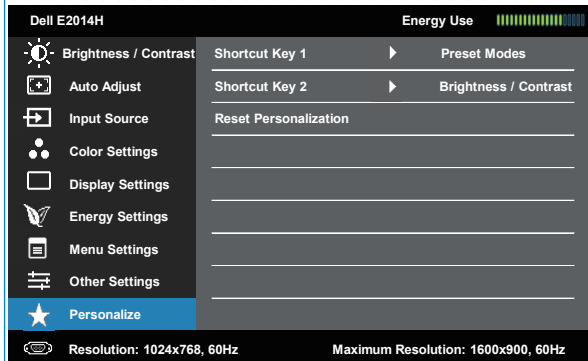
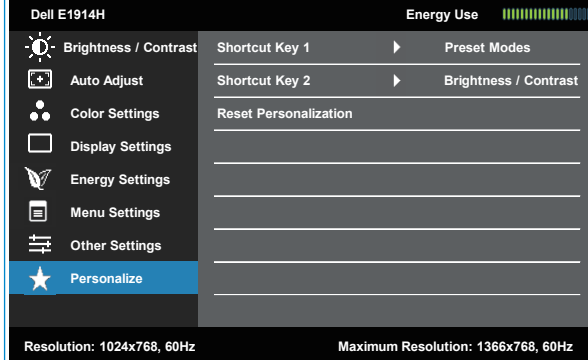
	<p>Reset Menu Settings</p> <p>Other Settings</p>	<p>Select this option to restore default menu settings.</p>  
	<p>DDC/CI</p>	<p>DDC/CI (Display Data Channel/Command Interface) allows a software on your computer to adjust the monitor display settings like the brightness, color balance etc.</p> <p>Enable (Default): Optimizes the performance of your monitor and provides a better customer experience.</p> <p>Disable: Disables the DDC/CI option and the following message appears on the screen.</p> 

<p>LCD Conditioning</p>	<p>This feature will help reduce minor cases of image retention.</p> <p>If an image appears to be stuck on the monitor, select LCD Conditioning to help eliminate any image retention. Using the LCD Conditioning feature may take some time. LCD Conditioning feature cannot remove severe cases of image retention or burn-in.</p> <p> NOTE: Use LCD Conditioning only when you experience a problem with image retention.</p> <p>The below warning message appears once user selects “Enable” LCD Conditioning.</p>  <p>The screenshot shows a dark grey dialog box with the following text: "Dell E1914H / E2014H", "The feature will help reduce minor cases of image retention. Depending on the degree of image retention, the program may take some time to run.", and "Do you wish to continue?". There are two buttons: a blue "No" button and a dark grey "Yes" button.</p>
<p>Reset Other Settings</p>	<p>Select this option to restore default other settings, such as DDC/CI.</p>
<p>Factory Reset</p>	<p>Resets all OSD settings to the factory preset values.</p>



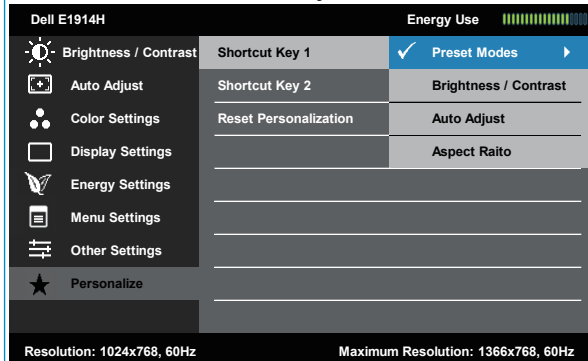
Personalize

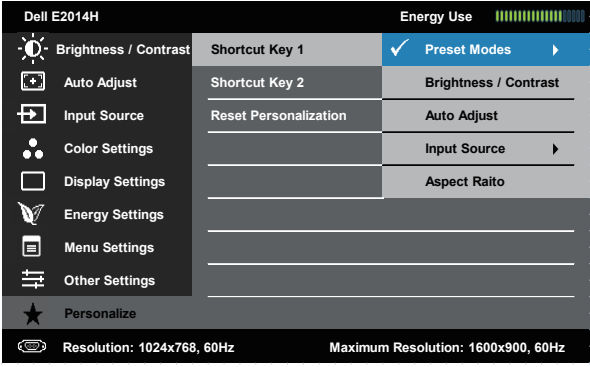
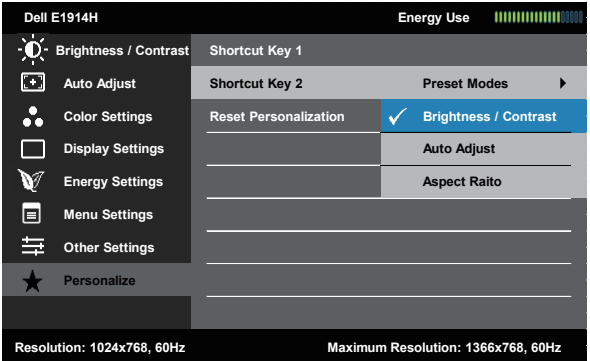
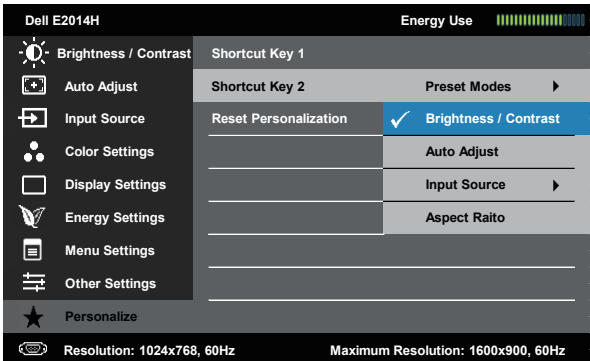
Selecting this option allows you to set two shortcut keys.



Shortcut Key 1

User can select from "Preset Modes", "Brightness/Contrast", "Auto Adjust", "Input Source" (for E2014H only), "Aspect Ratio" and set as shortcut key.



	
<p>Shortcut Key 2</p>	<p>User can select from "Preset Modes", "Brightness/Contrast", "Auto Adjust", "Input Source" (for E2014H only), "Aspect Ratio" and set as shortcut key.</p>  
<p>Reset Personalization</p>	<p>Allows you to restore shortcut key to the default setting.</p>

OSD Messages

When the monitor does not support a particular resolution mode you will see the following message:

E1914H:

Dell E1914H

The current input timing is not supported by the monitor display. Please change your input timing to **1366x768, 60Hz** or any other monitor listed timing as per the monitor specifications.

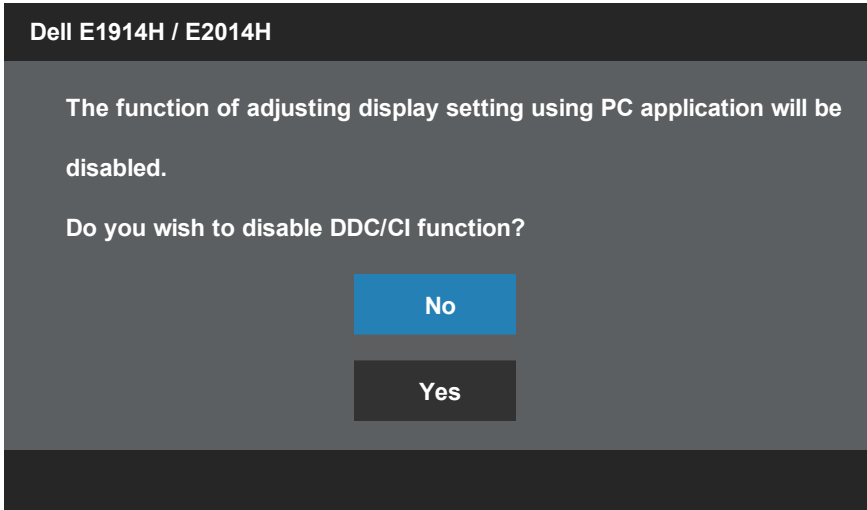
E2014H:

Dell E2014H

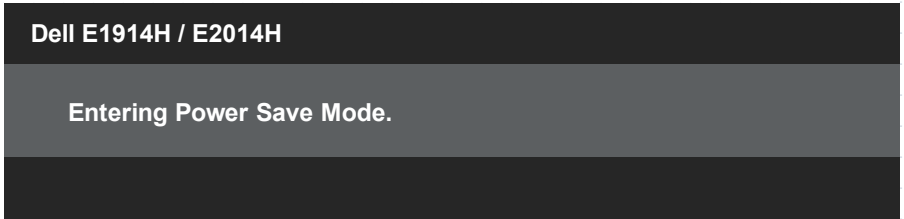
The current input timing is not supported by the monitor display. Please change your input timing to **1600x900, 60Hz** or any other monitor listed timing as per the monitor specifications.

This means that the monitor cannot synchronize with the signal that it is receiving from the computer. See **Monitor Specifications** for the horizontal and vertical frequency ranges addressable by this monitor. Recommended mode is 1366 x 768 (for E1914H) or 1600 x 900 (for E2014H).

You will see the following message before the DDC/CI function is disabled.

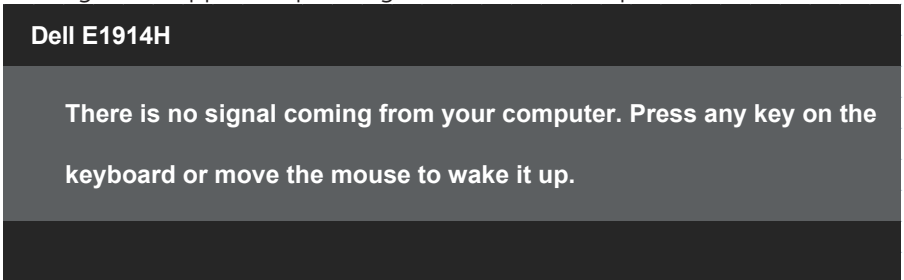


When the monitor enters the **Power Save** mode, the following message appears:



Activate the computer and wake up the monitor to gain access to the **OSD**.

If you press any button other than the power button, the following messages will appear depending on the selected input:



Dell E2014H

There is no signal coming from your computer. Press any key on the keyboard or move the mouse to wake it up. If there is no display, press the monitor button now to select the correct input source on the On-Screen-Display menu.

If VGA or DVI cable is not connected, a floating dialog box as shown below appears. The monitor will enter **Power Save Mode after 5 minutes** if left at this state.

Dell E1914H / E2014H



No VGA Cable

The display will go into Power Save Mode in 5 minutes



Dell E2014H



No DVI-D Cable

The display will go into Power Save Mode in 5 minutes



See [Solving Problems](#) for more information.

Setting the Maximum Resolution

To set the Maximum resolution for the monitor:

Windows XP:

1. Right-click on the desktop and select Properties.
2. Select the Settings tab.
3. Set the screen resolution to 1366 x 768 (for E1914H) or 1600 x 900 (for E2014H).
4. Click OK.

Windows Vista® ,Windows® 7 ,Windows® 8 / Windows® 8.1:

1. For Windows® 8 / Windows® 8.1 only, select the Desktop tile to switch to classic desktop.
2. Right-click on the desktop and click **Screen Resolution**.
3. Click the dropdown list of the screen resolution and select 1366 x 768 (for E1914H) or 1600 x 900 (for E2014H).
4. Click OK.

If you do not see 1366 x 768 (for E1914H) or 1600 x 900 (for E2014H) as an option, you may need to update your graphics driver. Depending on your computer, complete one of the following procedures:

If you have a Dell desktop or portable computer:

- Go to www.dell.com/support, enter your service tag, and download the latest driver for your graphics card.

If you are using a non-Dell computer (portable or desktop):

- Go to the support site for your computer and download the latest graphic drivers.
- Go to your graphics card website and download the latest graphic drivers.

Using the Tilt

Tilt

With the stand assembly, you can tilt the monitor for the most comfortable viewing angle.

21° typical (maximum 22°) 5° typical (maximum 5.5°)



NOTE: The stand base is detached when the monitor is shipped from the factory.

Troubleshooting

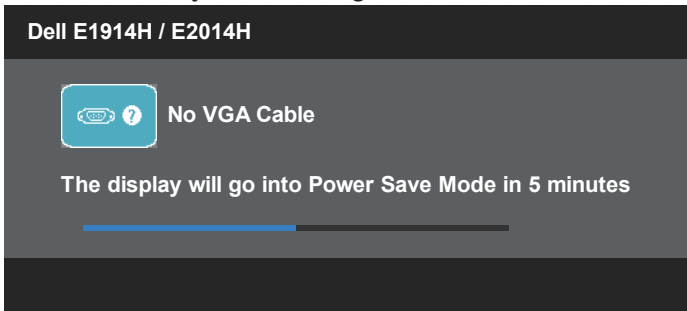
 **WARNING:** Before you begin any of the procedures in this section, follow the Safety Instruction

Self-Test

Your monitor provides a self-test feature that allows you to check whether your monitor is functioning properly. If your monitor and computer are properly connected but the monitor screen remains dark, run the monitor self-test by performing the following steps:


1. Turn off both your computer and the monitor.
2. Unplug the video cable from the back of the computer. To ensure proper Self-Test operation, remove both Digital (white connector) and the Analog (blue connector) cables from the back of computer.
3. Turn on the monitor.

The floating dialog box should appear on-screen (against a black background) if the monitor cannot sense a video signal and is working correctly. While in self-test mode, the power LED remains white. Also, depending upon the selected input, one of the dialogs shown below will continuously scroll through the screen.



4. This box also appears during normal system operation, if the video cable becomes disconnected or damaged. The monitor will enter **Power Save Mode after 5 minutes** if left at this state.
5. Turn off your monitor and reconnect the video cable; then turn on both your computer and the monitor.


If your monitor screen remains blank after you use the previous procedure, check your video controller and computer, because your monitor is functioning properly.

 **NOTE:** Self-test feature check is not available for S-Video, Composite, and Component video modes.

Built-in Diagnostics

Your monitor has a built-in diagnostic tool that helps you determine if the screen abnormality you are experiencing is an inherent problem with your monitor, or with your computer and video card.



 **NOTE:** You can run the built-in diagnostics only when the video cable is unplugged and the monitor is in self-test mode.

To run the built-in diagnostics:

1. Ensure that the screen is clean (no dust particles on the surface of the screen).
2. Unplug the video cable(s) from the back of the computer or monitor. The monitor then goes into the self-test mode.
3. Press and hold the **Button 1** and **Button 4** on the front panel simultaneously for 2 seconds. A gray screen appears.
4. Carefully inspect the screen for abnormalities.
5. Press the **Button 4** on the front panel again. The color of the screen changes to red.
6. Inspect the display for any abnormalities.
7. Repeat steps 5 and 6 to inspect the display in green, blue, black, white screens.

The test is complete when the white screen appears. To exit, press the **Button 4** again.

If you do not detect any screen abnormalities upon using the built-in diagnostic tool, the monitor is functioning properly. Check the video card and computer.

Common Problems

The following table contains general information about common monitor problems you might encounter and the possible solutions.

Common Symptoms	What You Experience	Possible Solutions
No Video/Power LED off	No picture	<ul style="list-style-type: none"> • Ensure that the video cable connecting the monitor and the computer is properly connected and secure. • Verify that the power outlet is functioning properly using any other electrical equipment. • Ensure that the power button is depressed fully. • Check the LED Button option under Energy Setting in OSD menu
No Video/Power LED on	No picture or no brightness	<ul style="list-style-type: none"> • Increase brightness & contrast controls via OSD. • Perform monitor self-test feature check. • Check for bent or broken pins in the video cable connector. • Ensure that the correct input source is selected via the Input Source Select menu. • Run the built-in diagnostics.
Poor Focus	Picture is fuzzy, blurry, or ghosting	<ul style="list-style-type: none"> • Perform Auto Adjust via OSD. • Adjust the Phase and Pixel Clock controls via OSD. • Eliminate video extension cables. • Reset the monitor to Factory Settings. • Change the video resolution to the correct aspect ratio (16:9).
Shaky/Jittery Video	Wavy picture or fine movement	<ul style="list-style-type: none"> • Perform Auto Adjust via OSD. • Adjust the Phase and Pixel Clock controls via OSD. • Reset the monitor to Factory Settings. • Check environmental factors. • Relocate the monitor and test in another room.

Missing Pixels	LCD screen has spots	<ul style="list-style-type: none"> • Cycle power on-off. • Pixel that is permanently off is a natural defect that can occur in LCD technology. <p>For more information on Dell Monitor Quality and Pixel Policy, see Dell Support site at: www.dell.com/support/monitors.</p>
Stuck-on Pixels	LCD screen has bright spots	<ul style="list-style-type: none"> • Cycle power on-off. • Pixel that is permanently off is a natural defect that can occur in LCD technology. <p>For more information on Dell Monitor Quality and Pixel Policy, see Dell Support site at: www.dell.com/support/monitors.</p>
Brightness Problems	Picture too dim or too bright	<ul style="list-style-type: none"> • Reset the monitor to Factory Settings. • Auto Adjust via OSD. • Adjust brightness & contrast controls via OSD.
Geometric Distortion	Screen not centered correctly	<ul style="list-style-type: none"> • Reset the monitor to Factory Settings. • Auto Adjust via OSD. • Adjust brightness & contrast controls via OSD. <p>NOTE: When using 'DVI-D', the positioning adjustments are not available.</p>
Horizontal/Vertical Lines	Screen has one or more lines	<ul style="list-style-type: none"> • Reset the monitor to Factory Settings. • Perform Auto Adjust via OSD. • Adjust Phase and Pixel Clock controls via OSD. • Perform monitor self-test feature check and determine if these lines are also in self-test mode. • Check for bent or broken pins in the video cable connector. <p>NOTE: When using 'DVI-D', the Pixel Clock and Phase adjustments are not available.</p>

Synchronization Problems	Screen is scrambled or appears torn	<ul style="list-style-type: none"> • Reset the monitor to Factory Settings. • Perform Auto Adjust via OSD. • Adjust Phase and Pixel Clock controls via OSD. • Perform monitor self-test feature check to determine if the scrambled screen appears in self-test mode. • Check for bent or broken pins in the video cable connector. • Restart the computer in the safe mode.
Safety-Related Issues	Visible signs of smoke or sparks	<ul style="list-style-type: none"> • Do not perform any troubleshooting steps. • Contact Dell immediately.
Intermittent Problems	Monitor malfunctions on & off	<ul style="list-style-type: none"> • Ensure that the video cable connecting the monitor to the computer is connected properly and is secure. • Reset the monitor to Factory Settings. • Perform monitor self-test feature check to determine if the intermittent problem occurs in self-test mode.

Missing Color	Picture missing color	<ul style="list-style-type: none"> • Perform monitor self-test feature check. • Ensure that the video cable connecting the monitor to the computer is connected properly and is secure. • Check for bent or broken pins in the video cable connector.
Wrong Color	Picture color not good	<ul style="list-style-type: none"> • Change the Color Setting Mode in the Color Settings OSD to Graphics or Video depending on the application. • Try different Color Preset Settings in Color Settings OSD. Adjust R/G/B value in Color Settings OSD if the Color Management is turned off. • Change the Input Color Format to PC RGB or YPbPr in the Advance Setting OSD.
Image retention from a static image left on the monitor for a long period of time	Faint shadow from the static image displayed appears on the screen	<ul style="list-style-type: none"> • Use the Power Management feature to turn off the monitor at all times when not in use (for more information, see Power Management Modes). • Alternatively, use a dynamically changing screensaver.

Product-Specific Problems

Specific Symptoms	What You Experience	Possible Solutions
Screen image is too small	Image is centered on screen, but does not fill entire viewing area	<ul style="list-style-type: none"> • Reset the monitor to Factory Settings.
Cannot adjust the monitor with the buttons on the front panel	OSD does not appear on the screen	<ul style="list-style-type: none"> • Turn off the monitor, unplug the power cord, plug back, and then turn on the monitor.
No Input Signal when user controls are pressed	No picture, the LED light is white. When you press "up", "down" or "Menu" key, the message " No input signal" will appear.	<ul style="list-style-type: none"> • Check the signal source. Ensure the computer is not in the power saving mode by moving the mouse or pressing any key on the keyboard. • Check whether the signal cable is plugged in properly. Re-plug the signal cable if necessary. • Reset the computer or video player.

The picture does not fill the entire screen	The picture cannot fill the height or width of the screen	<ul style="list-style-type: none"> • Due to different video formats (aspect ratio) of DVDs, the monitor may display in full screen. • Run the built-in diagnostics.
---	---	---

 **NOTE:** When choosing DVI-D mode, the Auto Adjust function is not available.

Dell Soundbar Problems


Common Symptoms	What You Experience	Possible Solutions
No sound for system where the Soundbar draws power from an AC adapter	No power to Soundbar - the power indicator is off	<ul style="list-style-type: none"> • Turn the Power/Volume knob on the Soundbar clockwise to the middle position; check if the power indicator (white LED) on the front of the Soundbar is illuminated. • Confirm that the power cable from the Soundbar is plugged into the adapter.
No Sound	Soundbar has power - power indicator is on	<ul style="list-style-type: none"> • Plug the audio line-in cable into the computer's audio out jack. • Set all volume controls to their maximum and ensure that the mute option is not enabled. • Play some audio content on the computer (example, audio CD, or MP3). • Turn the Power/Volume knob on the Soundbar clockwise to a higher volume setting. • Clean and reseat the audio line-in plug. • Test the Soundbar using another audio source (For example: portable CD player, MP3 player).

Distorted Sound	Computer's sound card is used as the audio source	<ul style="list-style-type: none"> • Clear any obstructions between the Soundbar and the user. • Confirm that the audio line-in plug is completely inserted into the jack of the sound card. • Set all Windows volume controls to their midpoints. • Decrease the volume of the audio application. • Turn the Power/Volume knob on the Soundbar counter-clockwise to a lower volume setting. • Clean and re-seat the audio line-in plug. • Troubleshoot the computer's sound card. • Test the Soundbar using another audio source (For example: portable CD player, MP3 player). • Avoid using an audio cable extension or audio jack converter.
Distorted Sound	Other audio source is used	<ul style="list-style-type: none"> • Clear any obstructions between the Soundbar and the user. • Confirm that the audio line-in plug is completely inserted into the jack of the audio source. • Decrease the volume of the audio source. • Turn the Power/Volume knob on the Soundbar counter-clockwise to a lower volume setting. • Clean and reseat the audio line-in plug.
Unbalanced Sound Output	Sound from only one side of Soundbar	<ul style="list-style-type: none"> • Clear any obstructions between the Soundbar and the user. • Confirm that the audio line-in plug is completely inserted into the jack of the sound card or audio source. • Set all Windows audio balance controls (L-R) to their midpoints. • Clean and reseat the audio line-in plug. • Troubleshoot the computer's sound card. • Test the Soundbar using another audio source (For example: portable CD player, MP3 player).

Low Volume	Volume is too low	<ul style="list-style-type: none">• Clear any obstructions between the Soundbar and the user.• Turn the Power/Volume knob on the Soundbar clockwise to the maximum volume setting.• Set all Windows volume controls to their maximum.• Increase the volume of the audio application.• Test the Soundbar using another audio source (For example: portable CD player, MP3 player)
------------	-------------------	--

Appendix

WARNING: Safety Instructions

 **WARNING:** Use of controls, adjustments, or procedures other than those specified in this documentation may result in exposure to shock, electrical hazards, and/or mechanical hazards.

For information on safety instructions, see the *Product Information Guide*.

FCC Notices (U.S. Only) and Other Regulatory Information


For FCC notices and other regulatory information, see the regulatory compliance website located at www.dell.com/regulatory_compliance.

This device complies with Part 15 of the FCC Rules. Operation is subject to the following two conditions:

- (1) this device may not cause harmful interference
- (2) this device must accept any interference received including interference that may cause undesired operation

Contact Dell

For customers in the United States, call 800-WWW-DELL (800-999-3355).

 **NOTE:** If you do not have an active Internet connection, you can find contact information on your purchase invoice, packing slip, bill, or Dell product catalog.

Dell provides several online and telephone-based support and service options. Availability varies by country and product, and some services may not be available in your area.

To get online monitor support content:

1. Visit www.dell.com/support/monitors

To contact Dell for sales, technical support, or customer service issues:

1. Visit www.dell.com/support.
2. Verify your country or region in the **Choose A Country/Region** drop-down menu at the top left of the page.
3. Click **Contact Us** on the top left side of the page.
4. Select the appropriate service or support link based on your need.
5. Choose the method of contacting Dell that is convenient for you.

Setting Up Your Monitor

Setting the display resolution to 1366 x 768 (for E1914H) or 1600 x 900 (for E2014H) (Maximum)

For optimal display performance while using the Microsoft Windows operating systems, set the display resolution to 1366 x 768 (for E1914H) or 1600 x 900 (for E2014H) pixels by performing the following steps:

In Windows XP:

1. Right-click on the desktop and click Properties.
2. Select the Settings tab.
3. Move the slider-bar to the right by pressing and holding the left-mouse button and adjust the screen resolution to 1366 x 768 (for E1914H) or 1600 x 900 (for E2014H).
4. Click OK.

In Windows Vista®, Windows® 7, Windows® 8 / Windows® 8.1:


1. For Windows® 8 / Windows® 8.1 only, select the Desktop tile to switch to classic desktop.
2. Right-click on the desktop and click Screen Resolution.
3. Click the dropdown list of the screen resolution and select 1366 x 768 (for E1914H) or 1600 x 900 (for E2014H).
4. Click OK.

If you do not see 1366 x 768 (for E1914H) or 1600 x 900 (for E2014H) as an option, you may need to update your graphics driver. Please choose the scenario below that best describes the computer system you are using, and follow the provided

1: If you have a Dell desktop or a Dell portable computer with Internet access

2: If you have a non Dell desktop, portable computer, or graphics card

If you have a Dell desktop or a Dell portable computer with Internet access

1. Go to <http://www.dell.com/support>, enter your service tag, and download the latest driver for your graphics
 2. After installing the drivers for your graphics adapter, attempt to set the resolution to 1366 x 768 (for E1914H) or 1600 x 900 (for E2014H) again.
-  **NOTE:** If you are unable to set the resolution to 1366 x 768 (for E1914H) or 1600 x 900 (for E2014H), please contact Dell to inquire about a graphics adapter that supports these resolutions.

If you have a non Dell desktop, portable computer, or graphics card

In Windows Vista®, Windows® 7, Windows® 8 / Windows® 8.1:



1. For Windows® 8 / Windows® 8.1 only, select the Desktop tile to switch to classic desktop.
 2. Right-click on the desktop and click Personalization.
 3. Click Change Display Settings.
 4. Click Advanced Settings.
 5. Identify your graphics controller supplier from the description at the top of the window (e.g. NVIDIA, ATI, Intel etc.).
 6. Please refer to the graphics card provider website for updated driver (for example, <http://www.ATI.com> OR <http://www.NVIDIA.com>).
 7. After installing the drivers for your graphics adapter, attempt to set the resolution to 1366 x 768 (for E1914H) or 1600 x 900 (for E2014H) again.
-  **NOTE:** If you are unable to set the resolution to 1366 x 768 (for E1914H) or 1600 x 900 (for E2014H), please contact the manufacturer of your computer or consider purchasing a graphics adapter that will support the video resolution of 1366 x 768 (for E1914H) or 1600 x 900 (for E2014H).

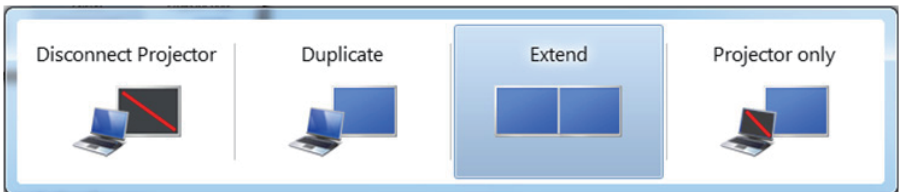
Procedures for setting up dual monitors in Windows Vista®, Windows® 7 or Windows® 8 / Windows® 8.1

For Windows Vista®

Connect the external monitor(s) to your laptop or desktop using a video cable (VGA, DVI, DP, HDMI etc.) and follow any of the below setup method.

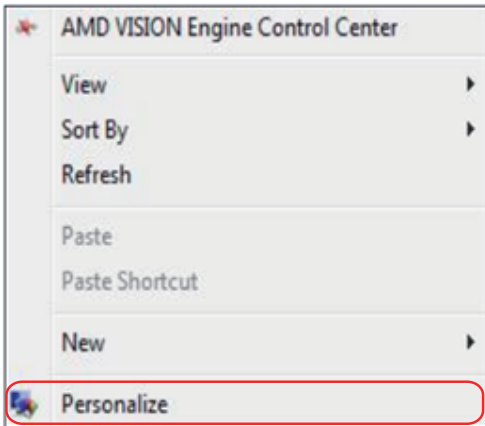
Method 1: Using keyboard shortcut "Win+P"

1. Press the **Windows logo key + P** on your keyboard.  + 
2. While holding down the **Windows logo key**, press **P** to toggle between the display selections.

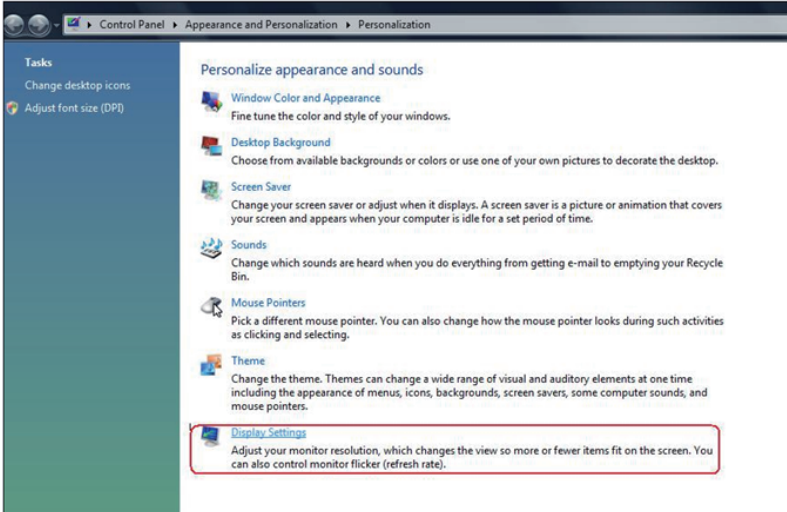


Method 2: Using the "Personalize" menu

1. Right-click on the desktop and click **Personalize**.

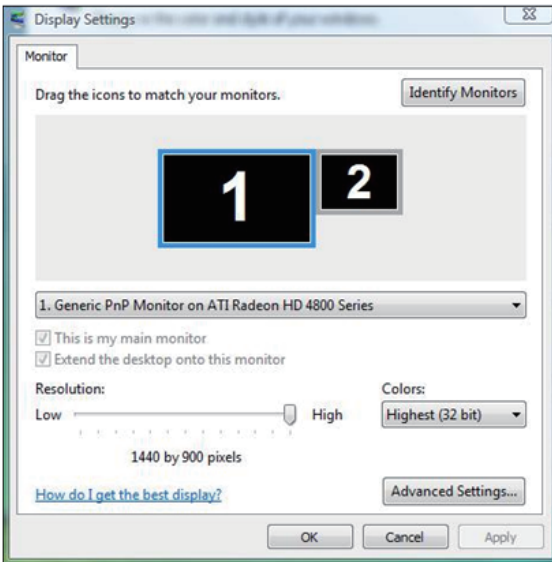


2. Click Display Settings.



3. Click Identify Monitors.

- You may need to restart your system and repeat steps 1 to 3 if the system does not detect the added monitor.

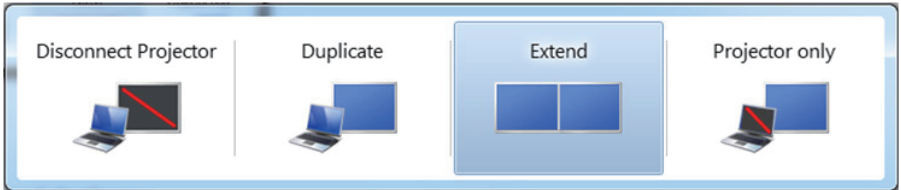


For Windows® 7

Connect the external monitor(s) to your laptop or desktop using a video cable (VGA, DVI, DP, HDMI etc.) and follow any of the below setup method.

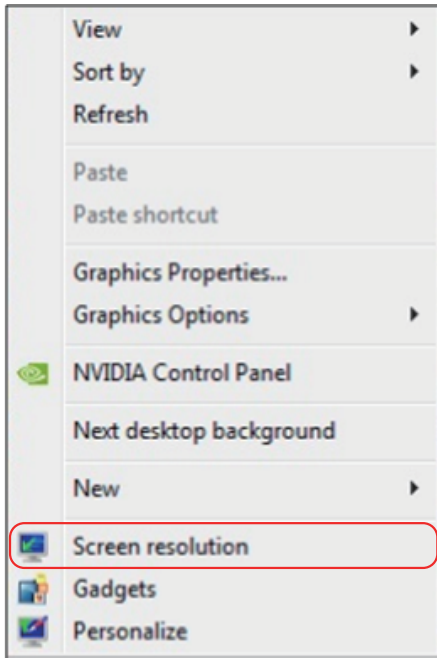
Method 1: Using keyboard shortcut “Win+P”

1. Press the **Windows logo key + P** on your keyboard.
2. While holding down the **Windows logo key**, press **P** to toggle between the display selections.

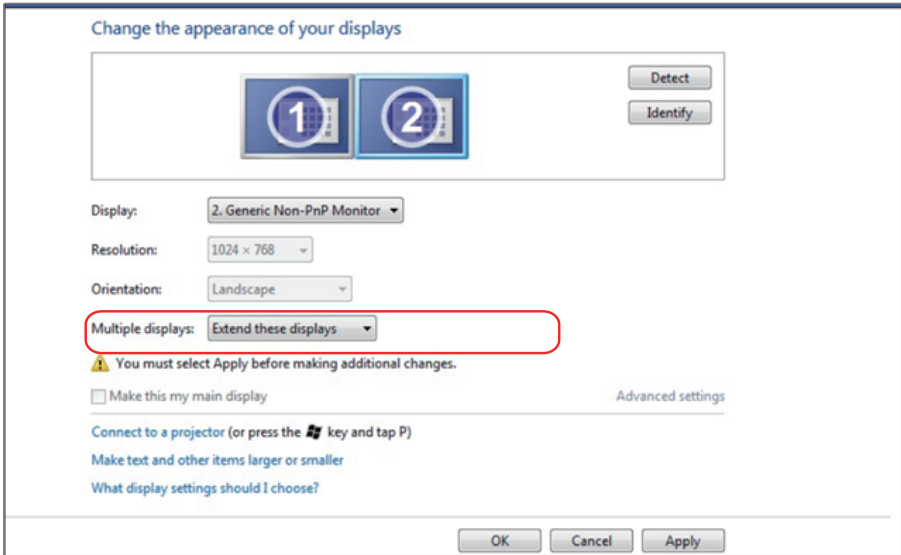


Method 2: Using the “Screen Resolution” menu

1. Right-click on the desktop and click **Screen resolution**.




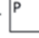
2. Click **Multiple displays** to choose a display selection. If you do not see the additional monitor listed, click **Detect**.
- You may need to restart your system and repeat steps 1 to 3 if the system does not detect the added monitor.

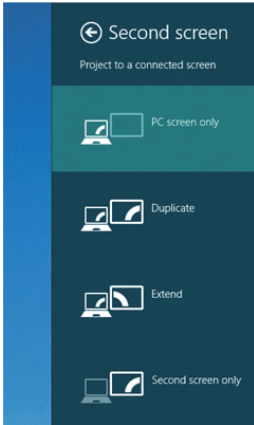


For Windows® 8 / Windows® 8.1

Connect the external monitor(s) to your laptop or desktop using a video cable (VGA, DVI, DP, HDMI etc.) and follow any of the below setup method.

Method 1: Using keyboard shortcut “Win+P”

1. Press the **Windows logo key + P** on your keyboard.  + 
2. While holding down the **Windows logo key**, press **P** to toggle between the display selections.

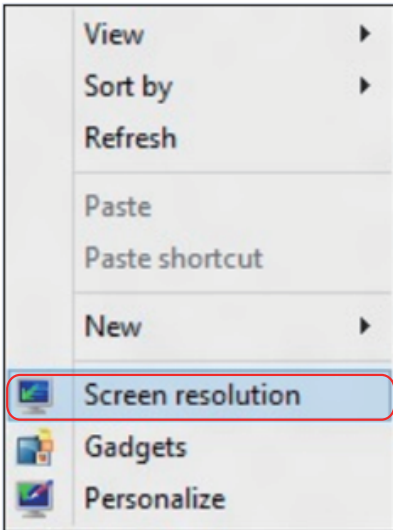


Method 2: Using the “Screen Resolution” menu

1. From the Start screen, select **Desktop** tile to switch to the Classic Windows desktop.

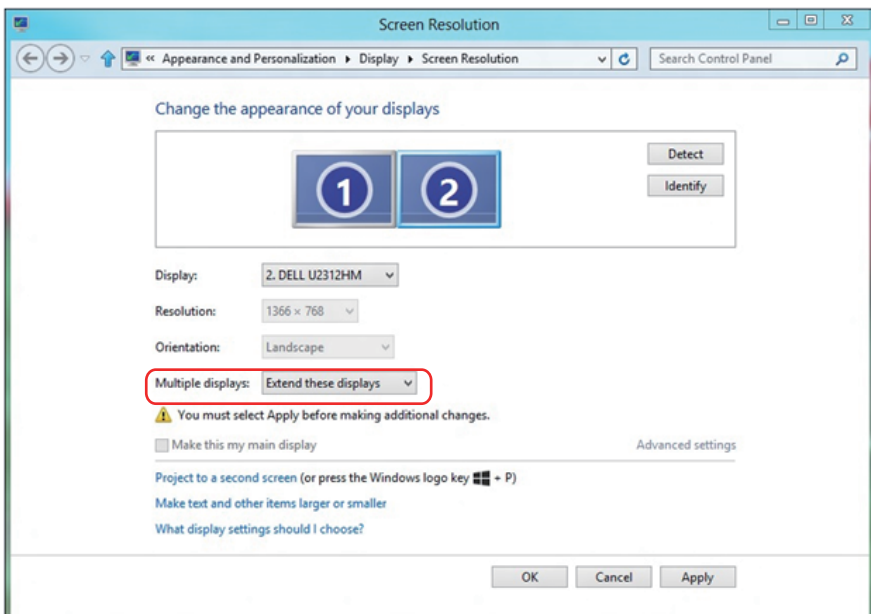


2. Right-click on the desktop and click **Screen resolution**.



3. Click **Multiple displays** to choose a display selection. If you do not see the additional monitor listed, click Detect.

- You may need to restart your system and repeat steps 1 to 3 if the system does not detect the added monitor.



Setting Display Styles For Multiple Monitor

After the external monitor(s) have been set up, users can select the desired display style from **Multiple displays** menu: Duplicate, Extend, Show Desktop On.

- **Duplicate these displays:** Duplicate the same screen on two monitors with the same resolution, chosen based on the monitor with a lower resolution.

For Windows Vista®

[DUPLICATE NOT AVAILABLE]

For Windows® 7

Change the appearance of your displays



Display: 1. Mobile PC Display

Resolution: 1024 x 768

Orientation: Landscape

Multiple displays: Extend these displays

You must select a display style for each monitor. [Additional changes.](#)

Make this my main display

[Advanced settings](#)

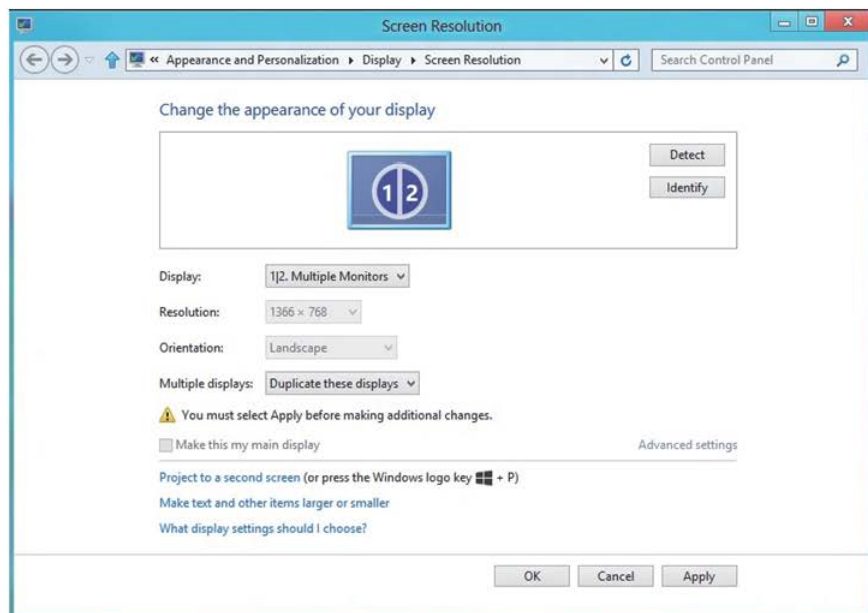
[Connect to a projector](#) (or press the key and tap P)

[Make text and other items larger or smaller](#)

[What display settings should I choose?](#)

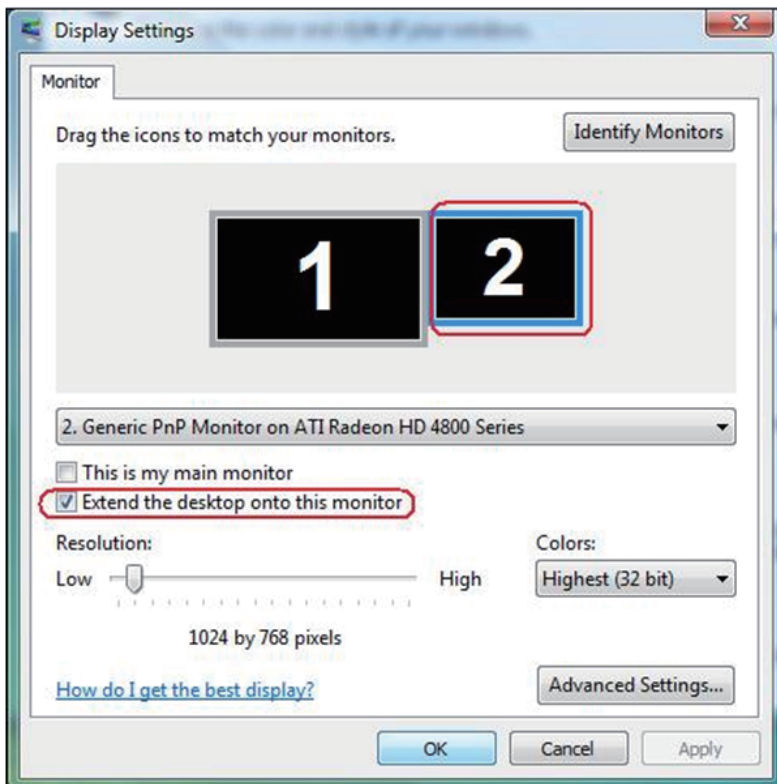
OK Cancel Apply

For Windows® 8 / Windows® 8.1



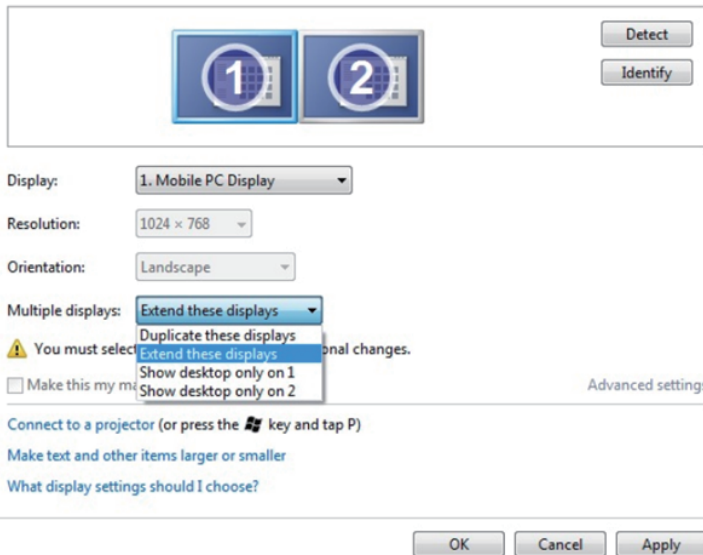
- **Extend these displays:** This option is recommended when an external monitor is connected to a laptop, and each monitor can display different screen independently to improve user convenience. The relative position of the screens can be set up here, for example monitor 1 may be set up to be to the left of monitor 2 or vice versa. This depends on the physical position of the LCD monitor in relation to the laptop. The horizontal line displayed on both monitors can be based on the laptop or external monitor. These are all adjustable options, and all a user need do is drag the monitor of the main screen to the extended monitor.

For Windows Vista®



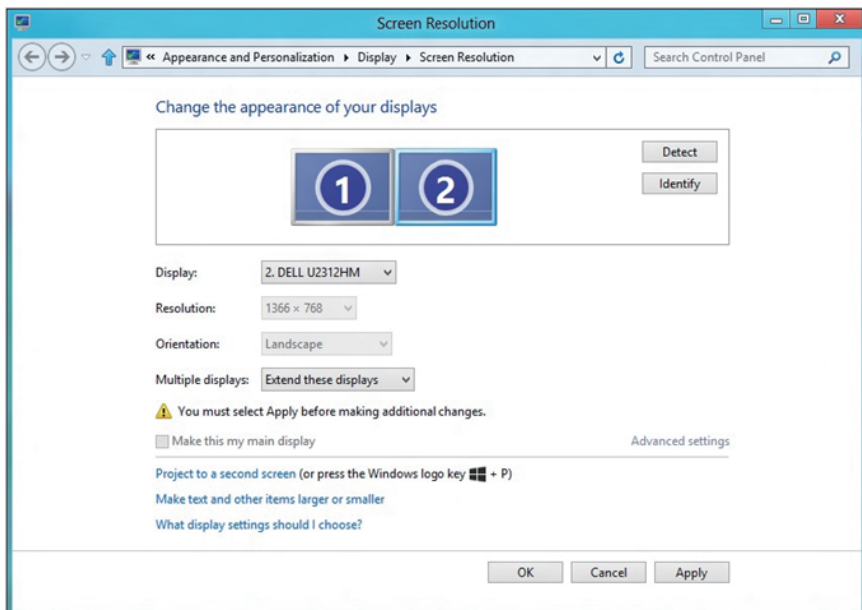
For Windows® 7

Change the appearance of your displays



The screenshot shows the Windows 7 Display settings window. At the top, there are two monitor icons labeled '1' and '2'. To the right of these icons are 'Detect' and 'Identify' buttons. Below the icons, the 'Display:' dropdown is set to '1. Mobile PC Display'. The 'Resolution:' dropdown is set to '1024 x 768'. The 'Orientation:' dropdown is set to 'Landscape'. The 'Multiple displays:' dropdown is open, showing options: 'Extend these displays' (selected), 'Duplicate these displays', 'Show desktop only on 1', and 'Show desktop only on 2'. A warning icon and text state: 'You must select a display mode before making additional changes.' Below this is a checkbox for 'Make this my main display' which is unchecked. To the right of the checkbox is a link for 'Advanced settings'. At the bottom of the window are 'OK', 'Cancel', and 'Apply' buttons.

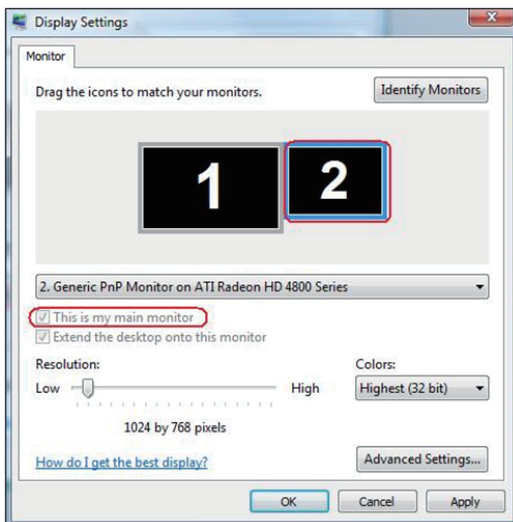
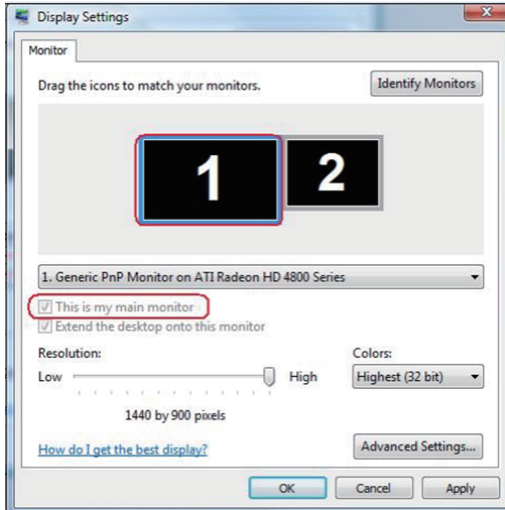
For Windows® 8 / Windows® 8.1



The screenshot shows the Windows 8/8.1 'Screen Resolution' control panel window. The title bar reads 'Screen Resolution'. The breadcrumb path is 'Appearance and Personalization > Display > Screen Resolution'. The window content is identical to the Windows 7 screenshot, showing two monitors labeled '1' and '2'. The 'Display:' dropdown is set to '2. DELL U2312HM'. The 'Resolution:' dropdown is set to '1366 x 768'. The 'Orientation:' dropdown is set to 'Landscape'. The 'Multiple displays:' dropdown is set to 'Extend these displays'. A warning icon and text state: 'You must select Apply before making additional changes.' Below this is a checkbox for 'Make this my main display' which is unchecked. To the right of the checkbox is a link for 'Advanced settings'. At the bottom of the window are 'OK', 'Cancel', and 'Apply' buttons.

- **Show desktop only on...:** Display the status of a particular monitor. This option is typically chosen when the laptop is used as a PC so the user can enjoy a large external monitor. Most current laptops support mainstream resolutions. As shown in the figure above, the resolution of the laptop monitor is only 1280 x 800, but after connecting a 27" external LCD monitor, users can immediately improve their visual enjoyment to 1920 x 1080 Full HD quality.

For Windows Vista®



For Windows® 7

Change the appearance of your displays



Display: 1. Mobile PC Display


Resolution: 1024 x 768

Orientation: Landscape

Multiple displays: Show desktop only on 1

⚠ You must select a display mode for each display. Some changes may require a restart.

Make this my main display [Advanced settings](#)

Connect to a projector (or press the  key and tap P)

Make text and other items larger or smaller

What display settings should I choose?

OK Cancel Apply

Change the appearance of your displays



Display: 1. Mobile PC Display


Resolution: 1024 x 768

Orientation: Landscape

Multiple displays: Show desktop only on 2

⚠ You must select a display mode for each display. Some changes may require a restart.

Make this my main display [Advanced settings](#)

Connect to a projector (or press the  key and tap P)

Make text and other items larger or smaller

What display settings should I choose?

OK Cancel Apply

For Windows® 8 / Windows® 8.1

